

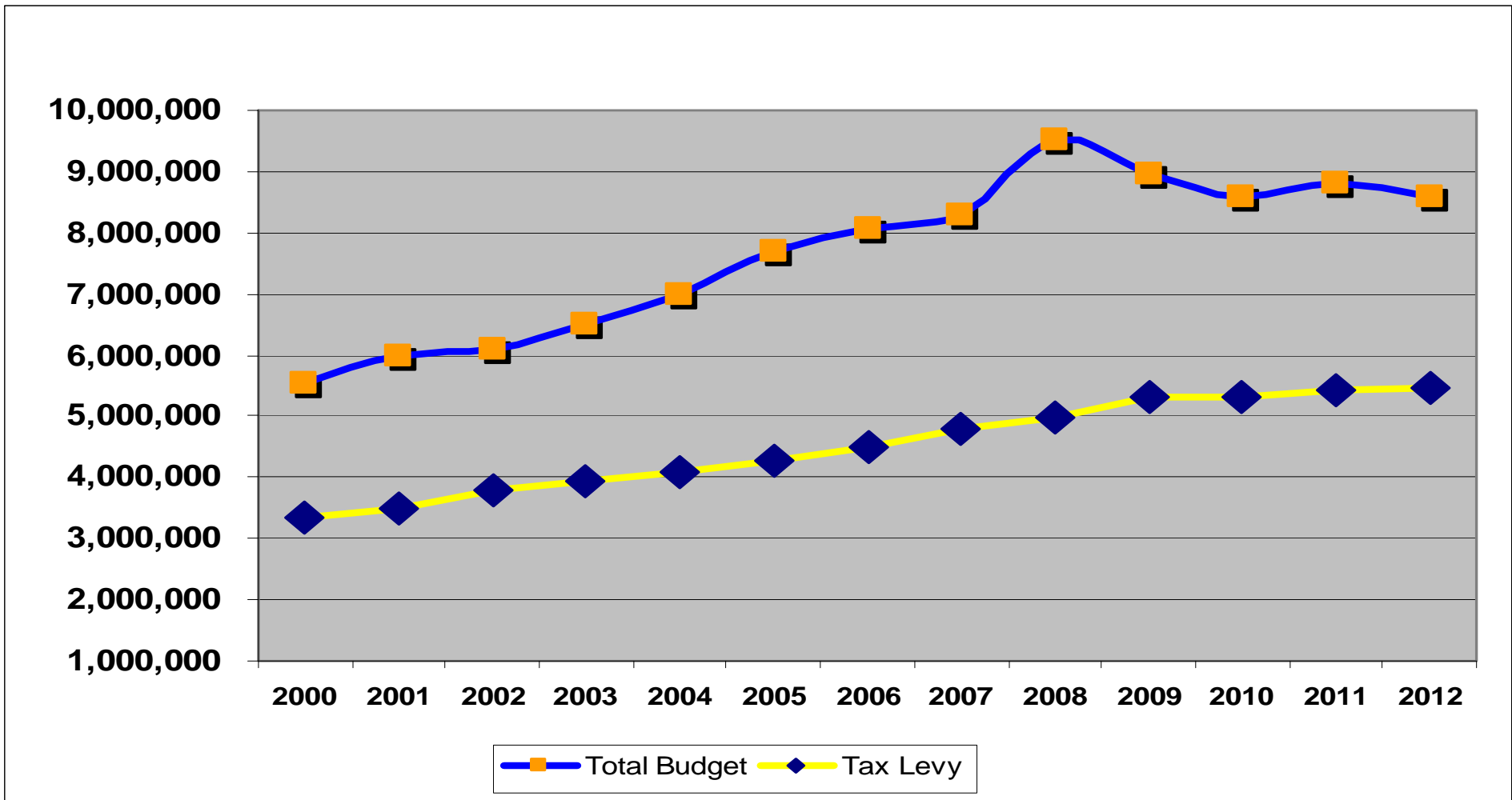


Harding Township Benchmarking Examination: Public Safety

Presentation to Harding Residents
August 2012

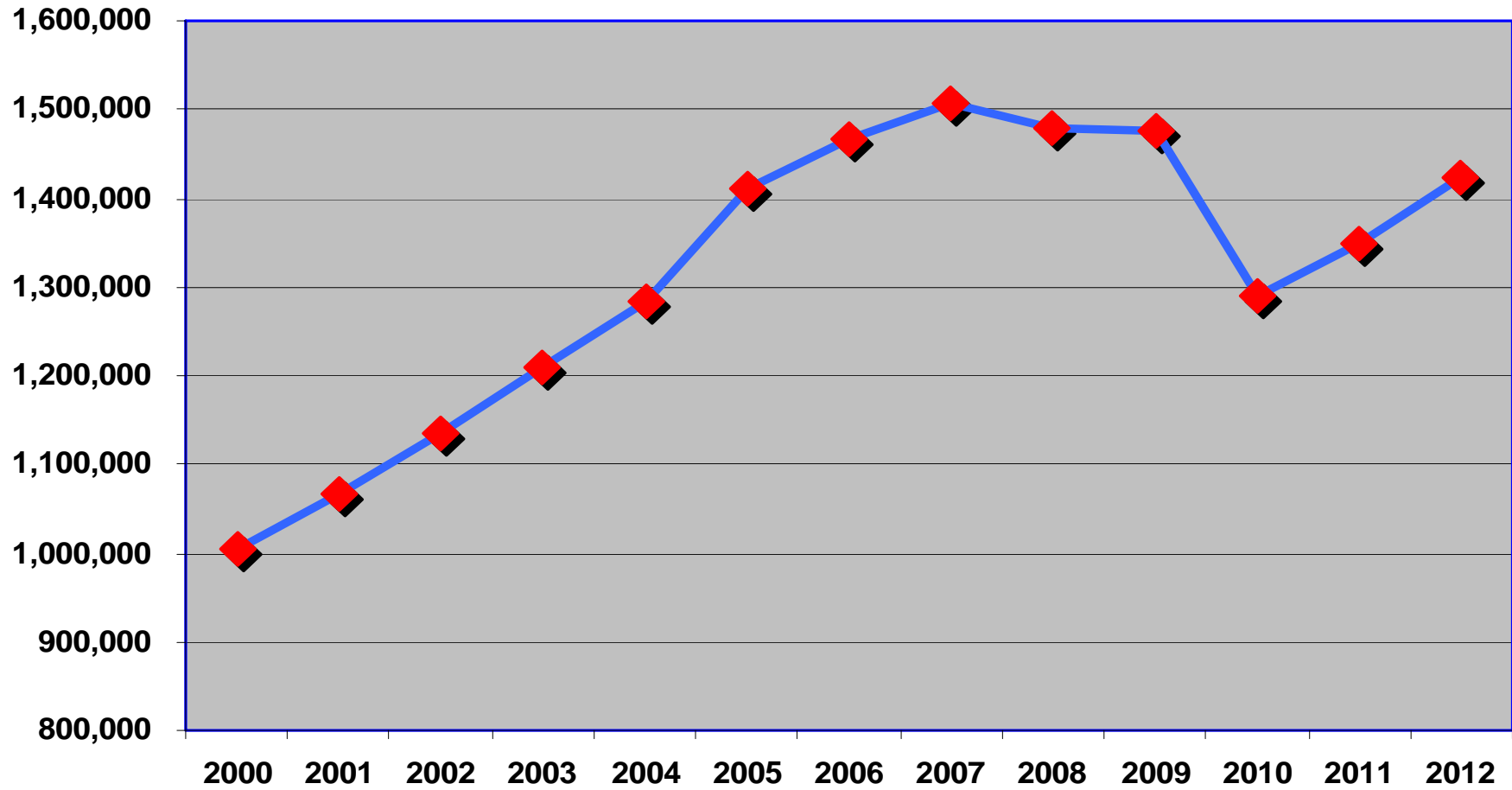


Harding Township: Total Budget and Tax Levy 2000 - 2012



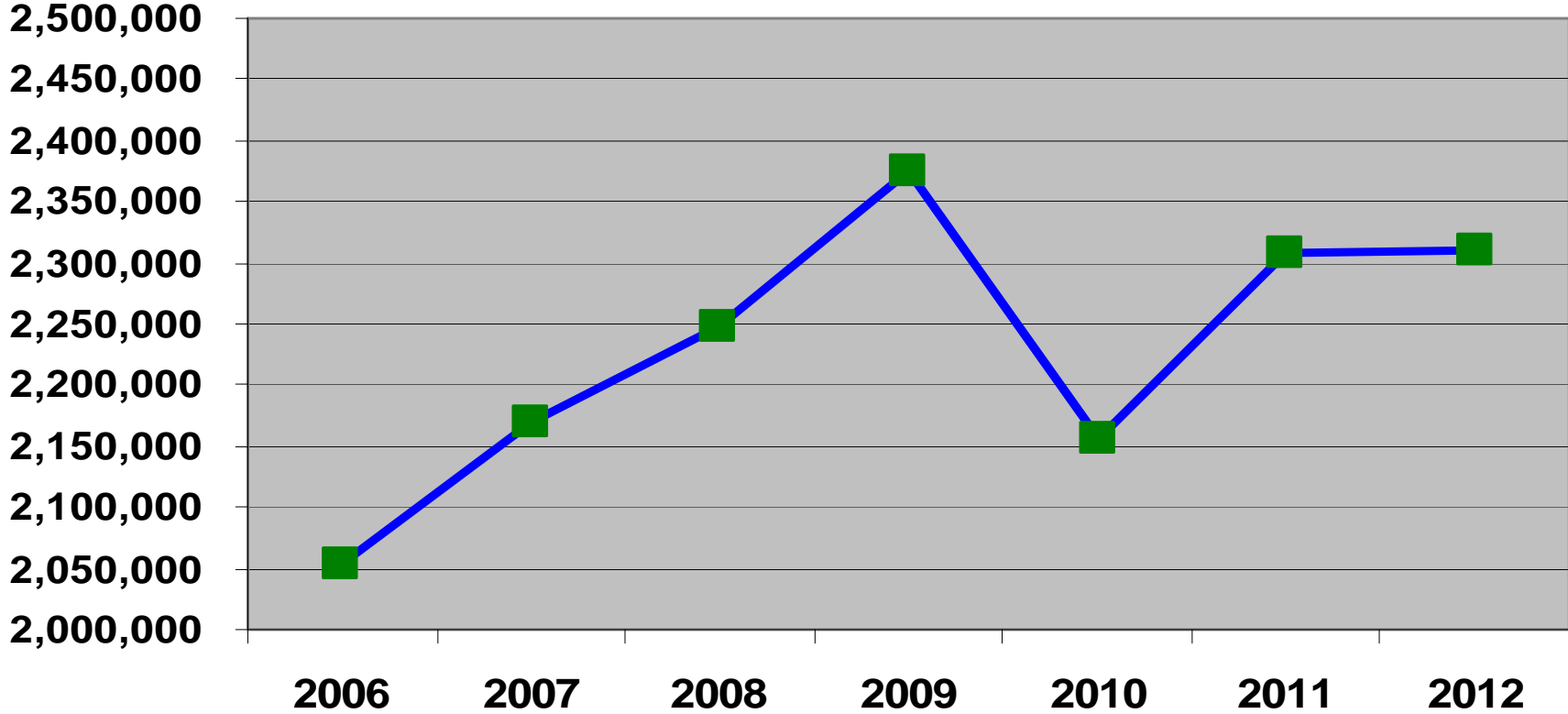
Year	2001	2002	2003	2004	2005	2006	2007	2008	2009	2010	2011	2012
Budget YTY% Change	8.69%	1.41%	7.03%	7.44%	9.70%	5.28%	2.41%	15.12%	-6.00%	-4.12%	2.48%	-2.33%
Tax Levy YTY% Change	5.10%	8.43%	3.60%	3.47%	4.90%	5.40%	6.62%	3.77%	6.14%	0.02%	2.51%	0.88%

Police Salary Budget 2000-2012



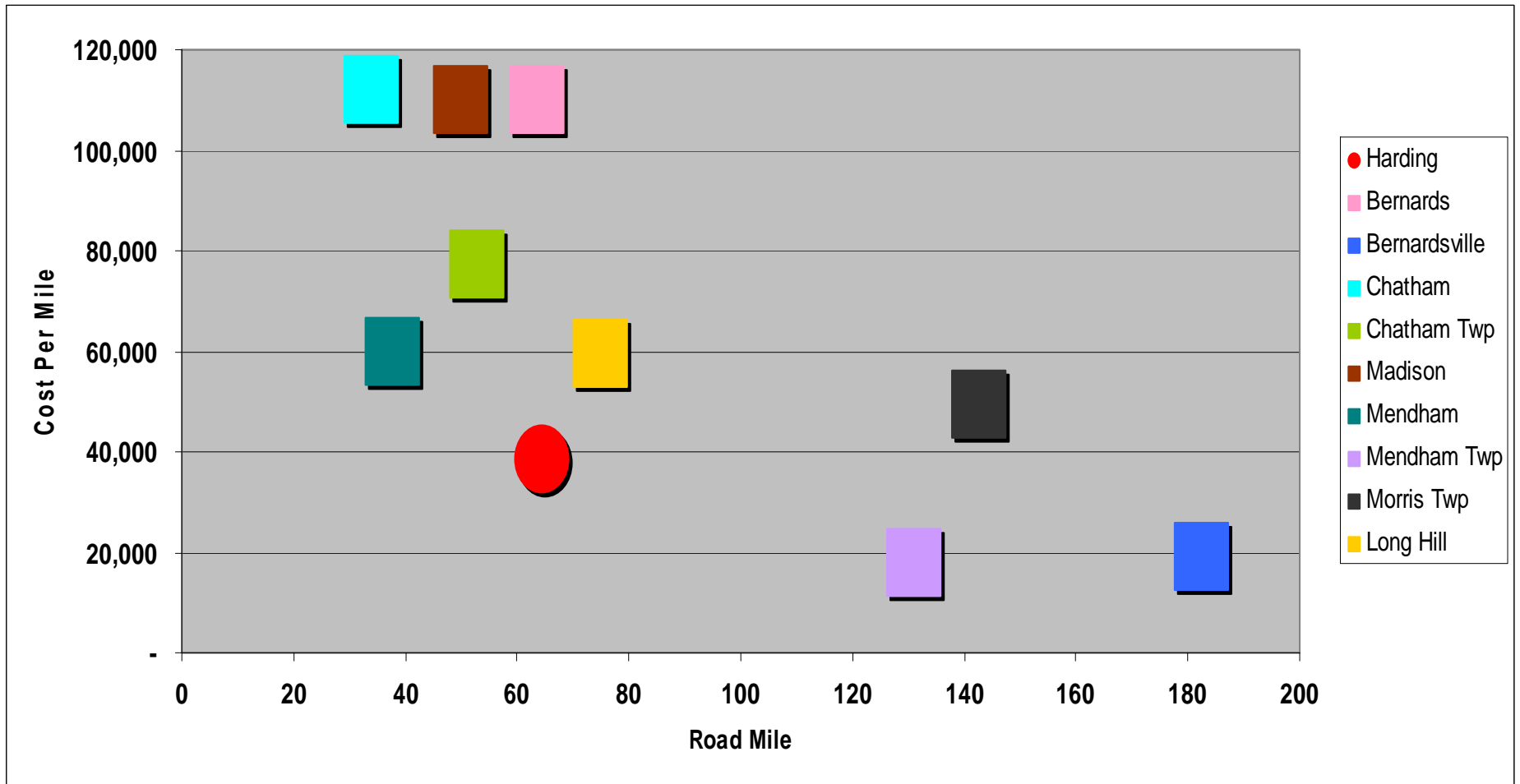
Year	2001	2002	2003	2004	2005	2006	2007	2008	2009	2010	2011	2012
YTY% Change	6.15%	6.39%	6.51%	6.28%	9.76%	4.07%	2.61%	-1.75%	-0.30%	-12.54%	4.67%	5.47%

Police Salary Budget and Benefits 2006 - 2012



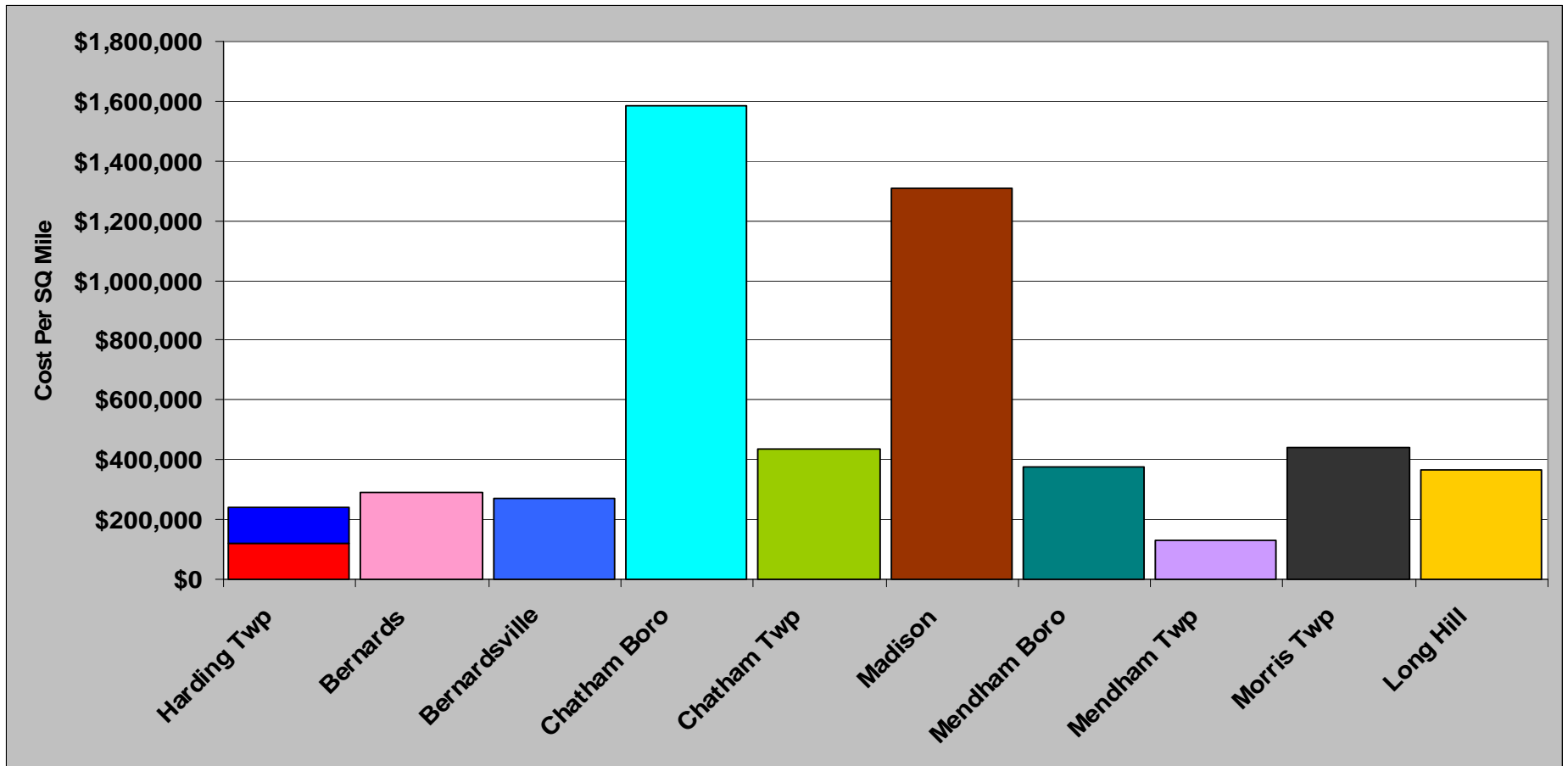
Year	2007	2008	2009	2010	2011	2012
YTY% Change	5.61%	3.61%	5.67%	-9.21%	7.07%	0.04%

Total Public Safety Department Cost (2012) Per Road Mile



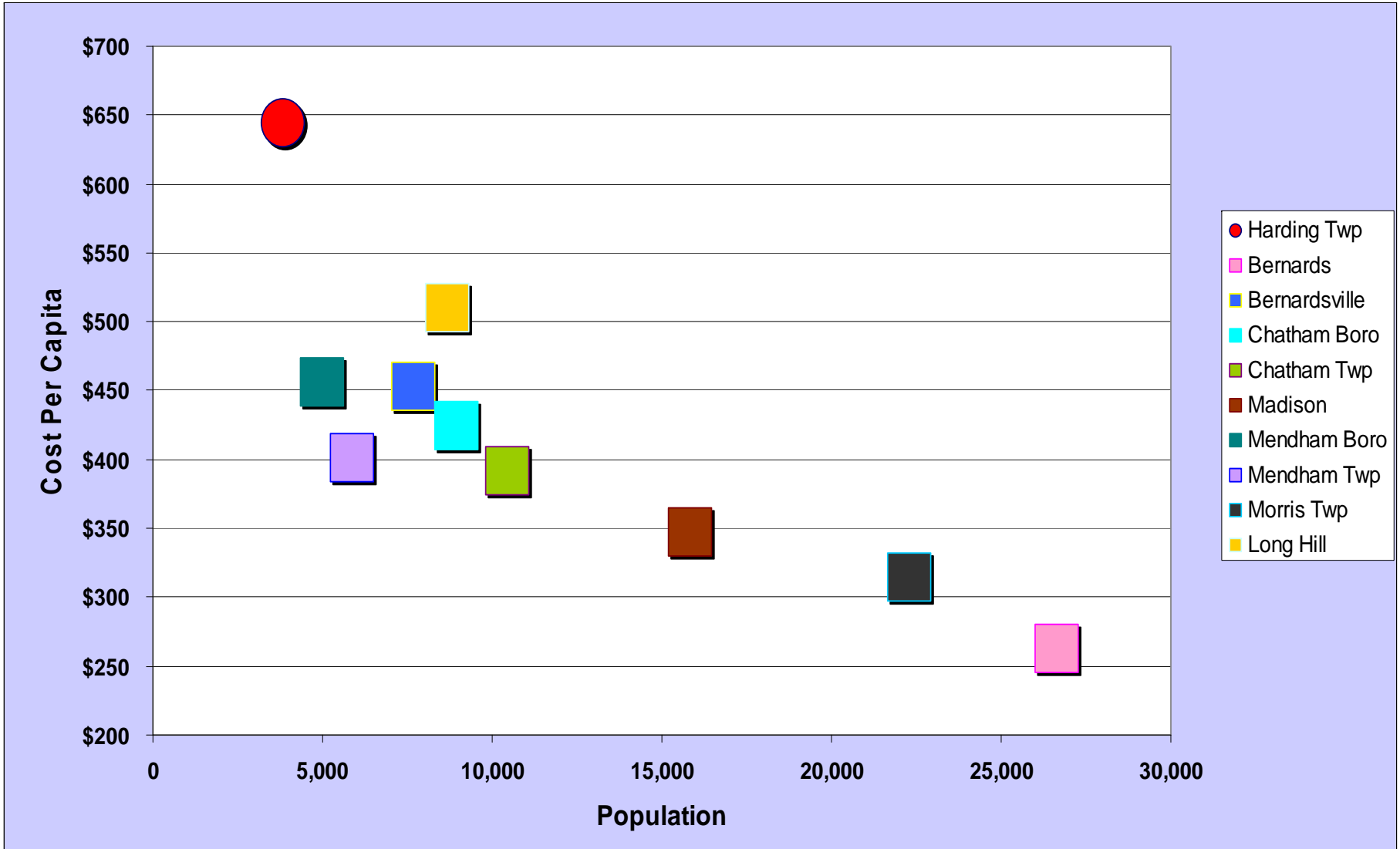
Road Mile Includes: County Road, Municipal Road, State Road, and Private Road

Total Public Safety Department Cost (2012) Per Sq Mile



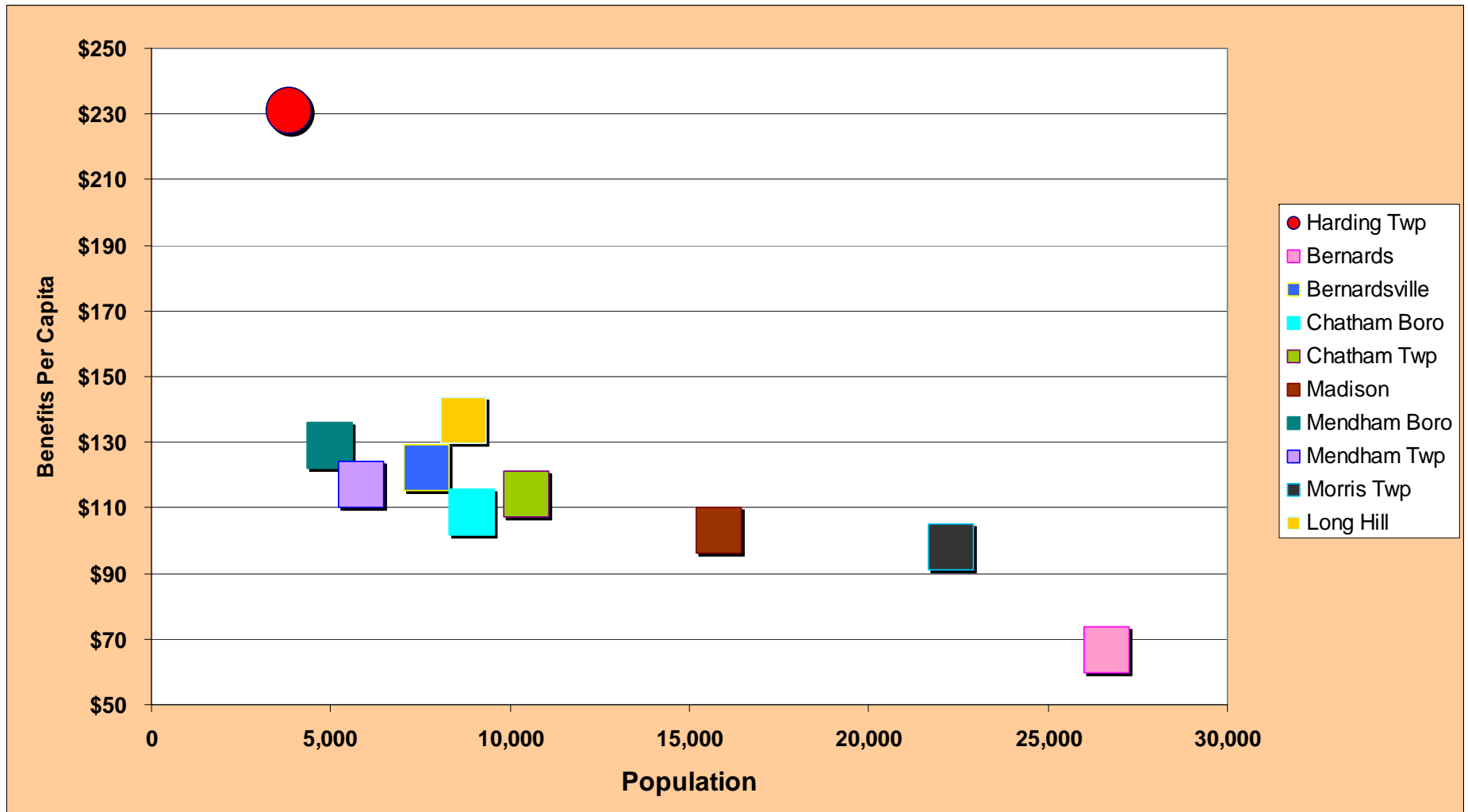
Harding Twp: Red = 20.4 Sq Mile
 Red+Blue = 10.2 Sq Mile

Total Public Safety Cost (2012) Per Capita



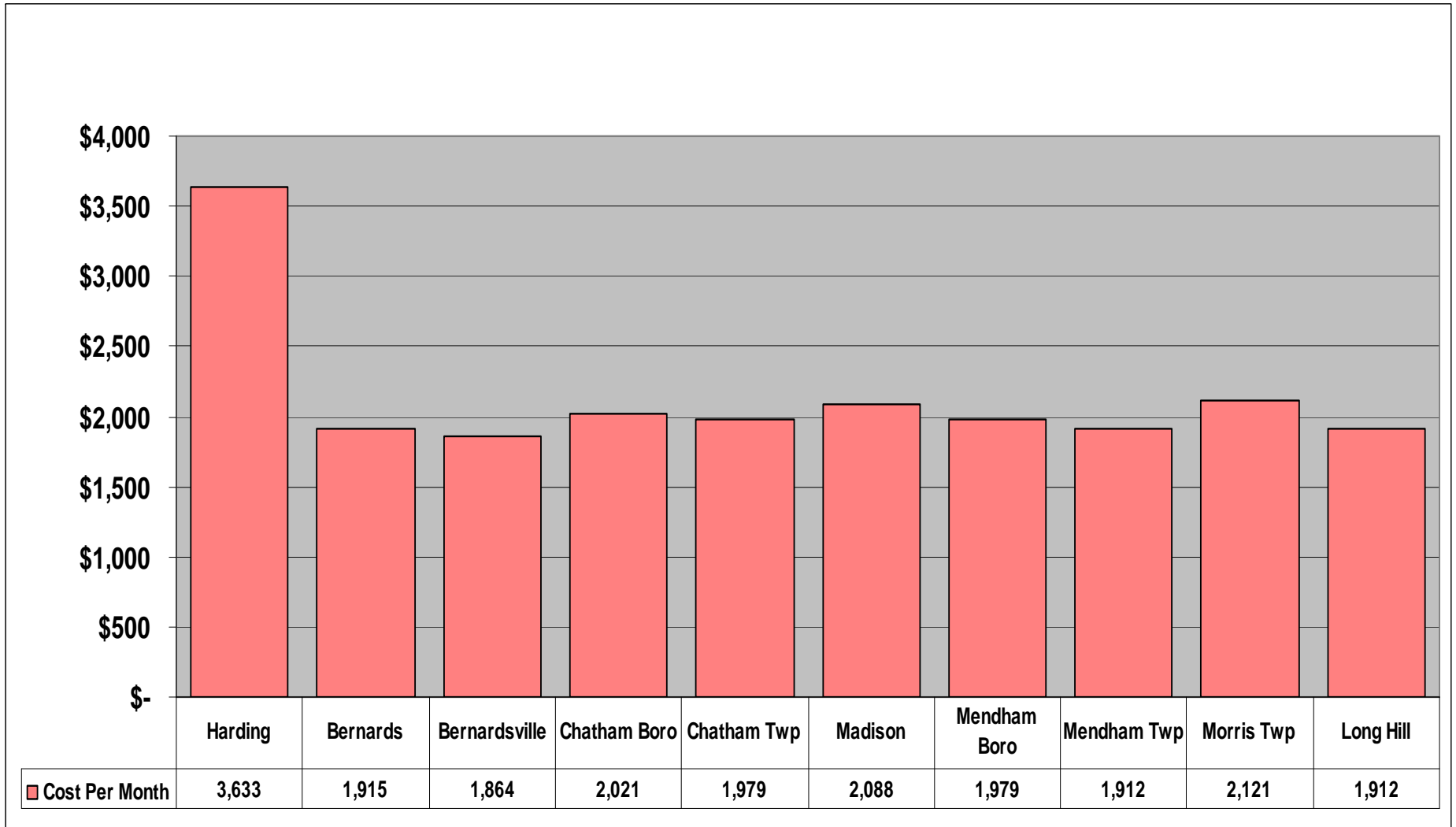
Total Cost Includes: Salaries, Other Expenses, Dispatch, Pension, FICA and Health Benefits

Public Safety Non-Salary Cost Per Capita (2012): Harding Township and Neighboring Towns



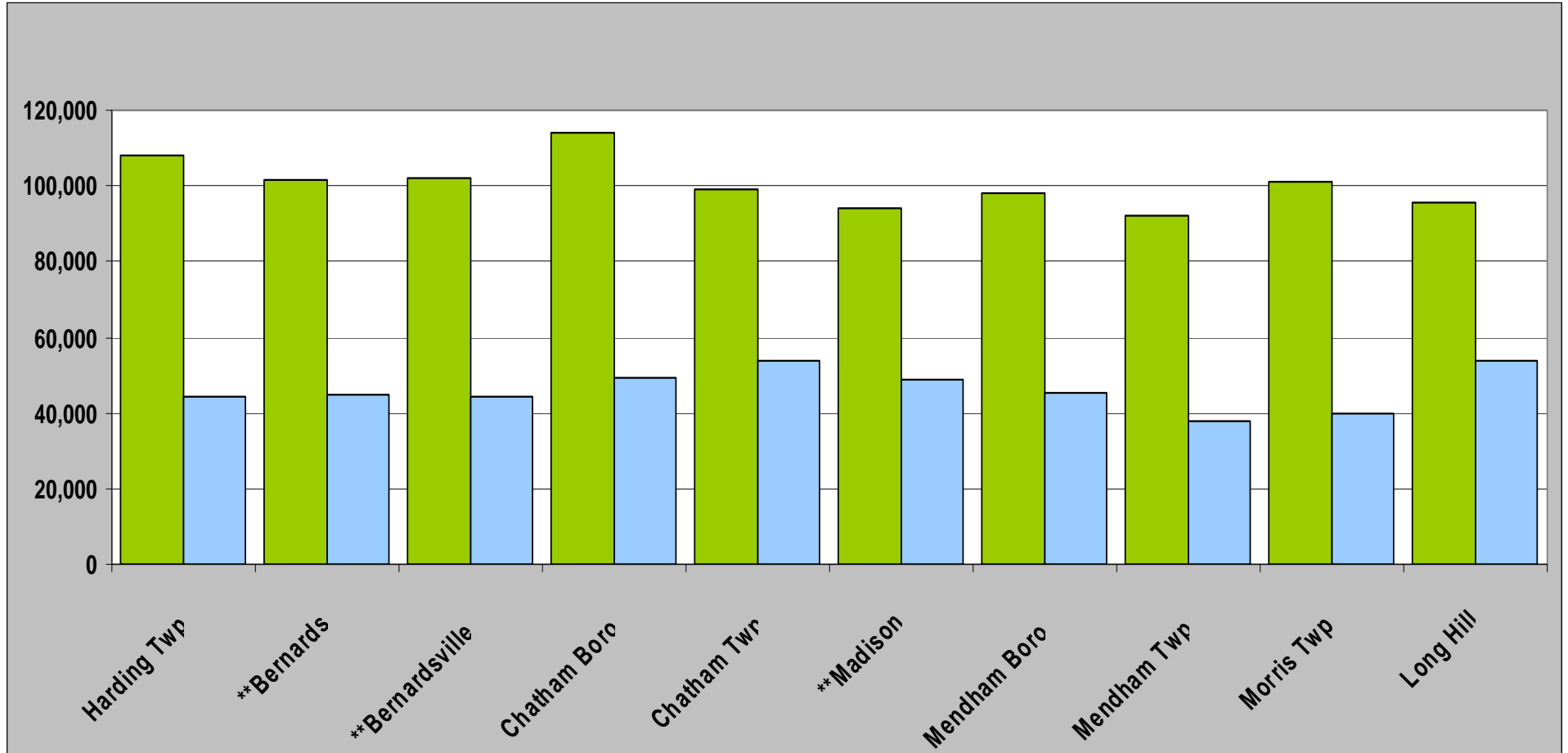
Non-Salary: Health Insurance, Pension, and FICA

Health Benefit Cost Per Month Per Public Safety Officer on Family Plan



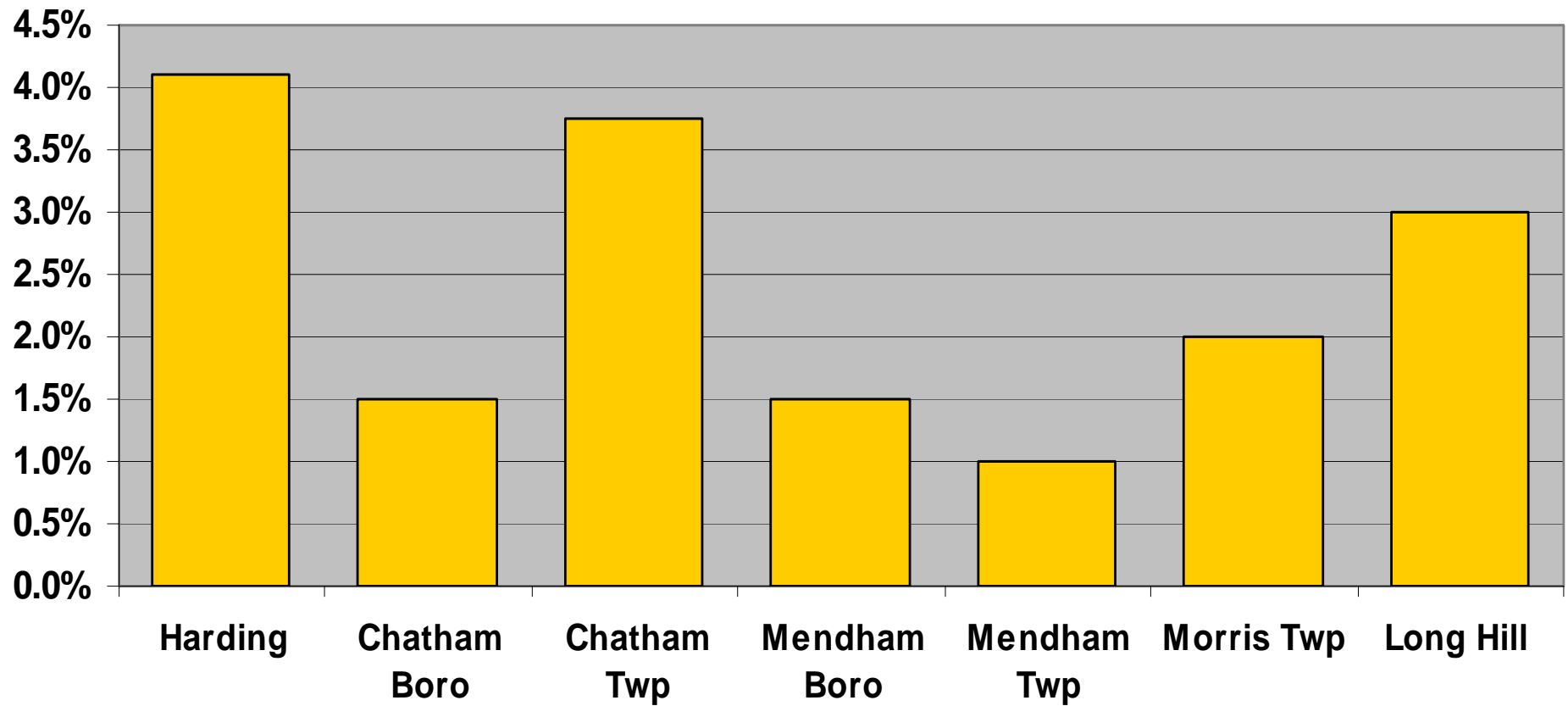
Actual cost per month is lower for those towns where employees contribute

2012 Public Safety Officer Salary Range – Top Step & Probationary Step

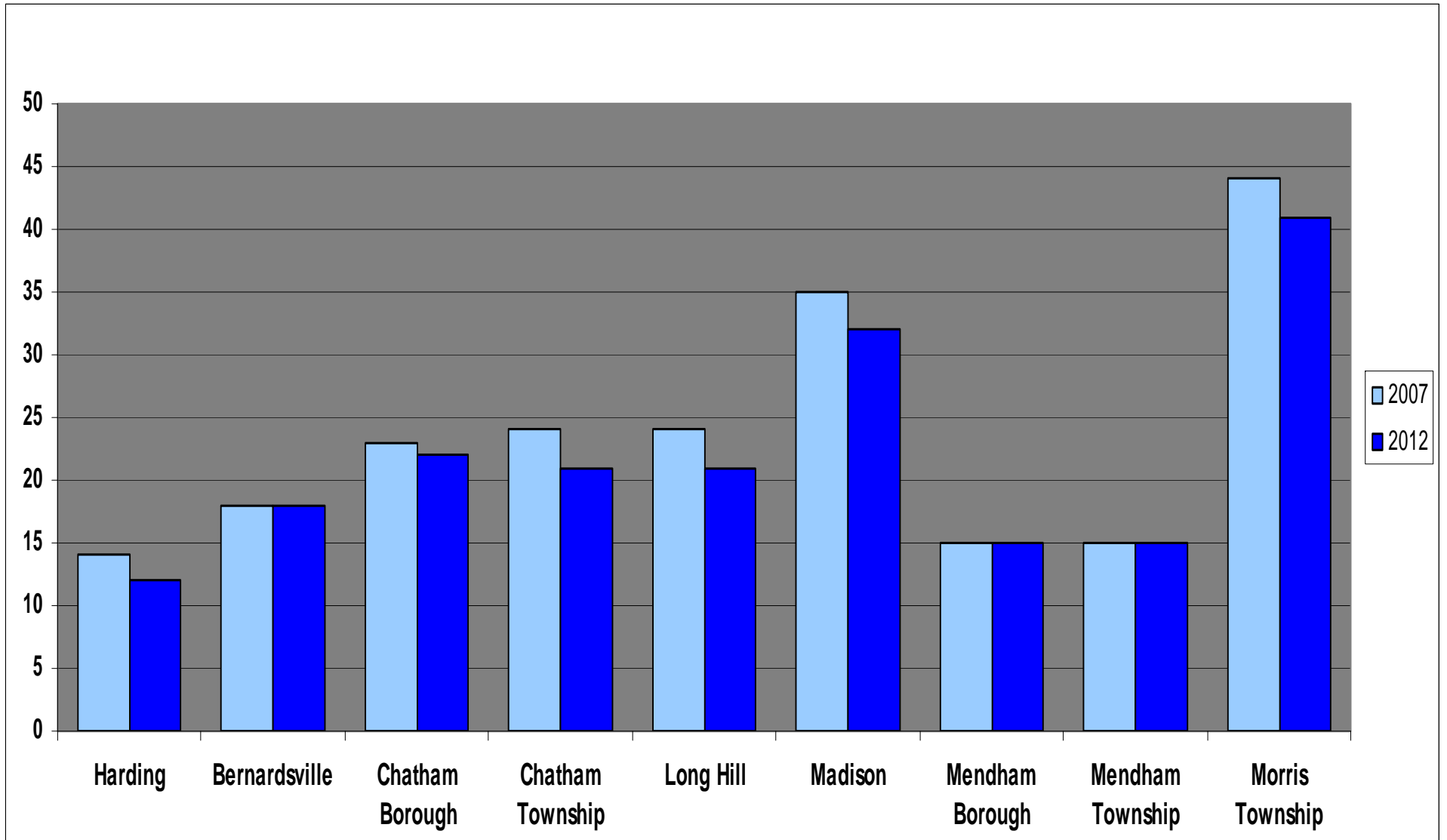


** Current Year Contract Not Available

2012 Salary Increase Percentage

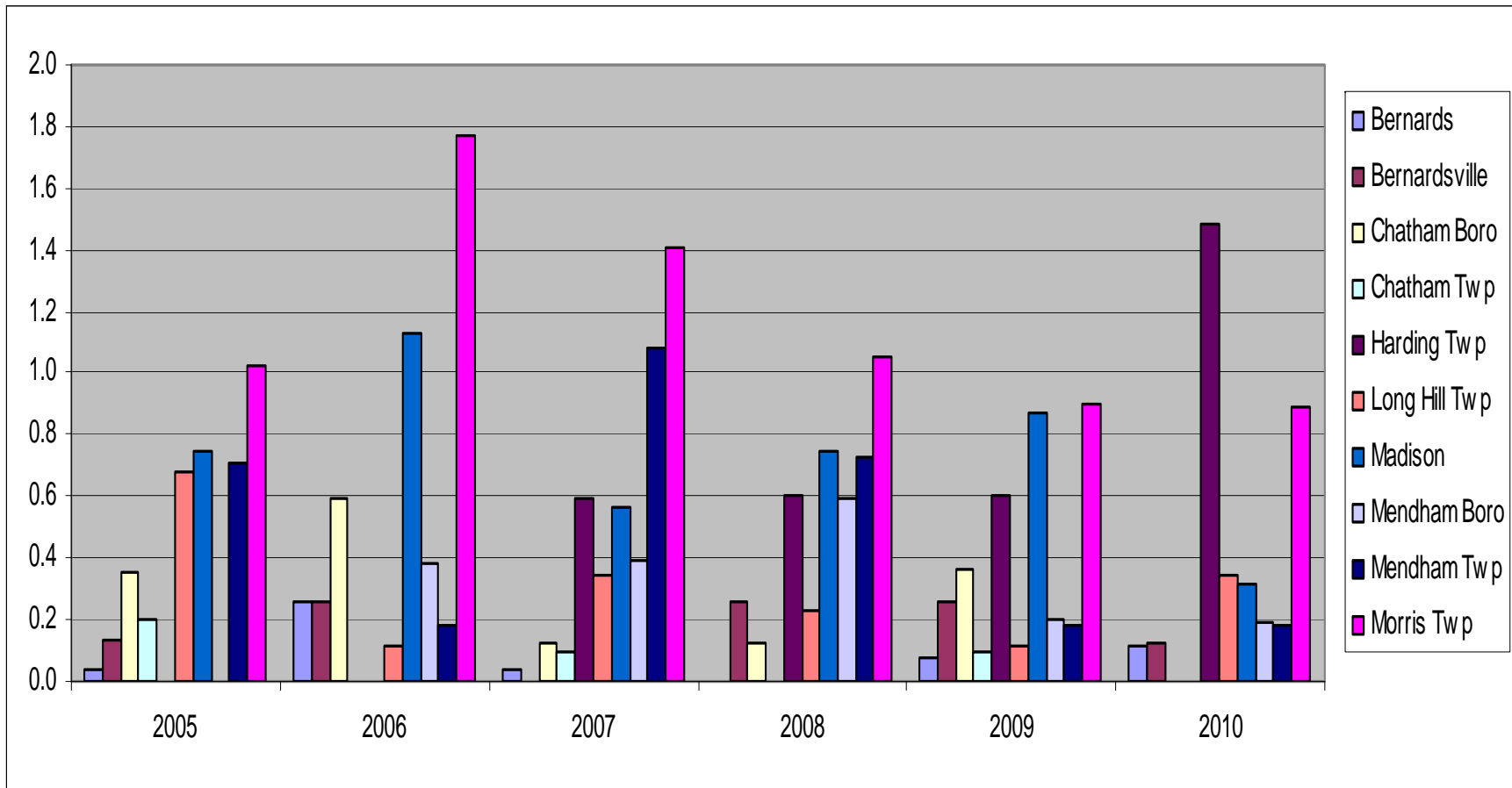


Public Safety Staffing – Harding and Neighboring Towns 2007 vs 2012



Violent Crime 2005 – 2010

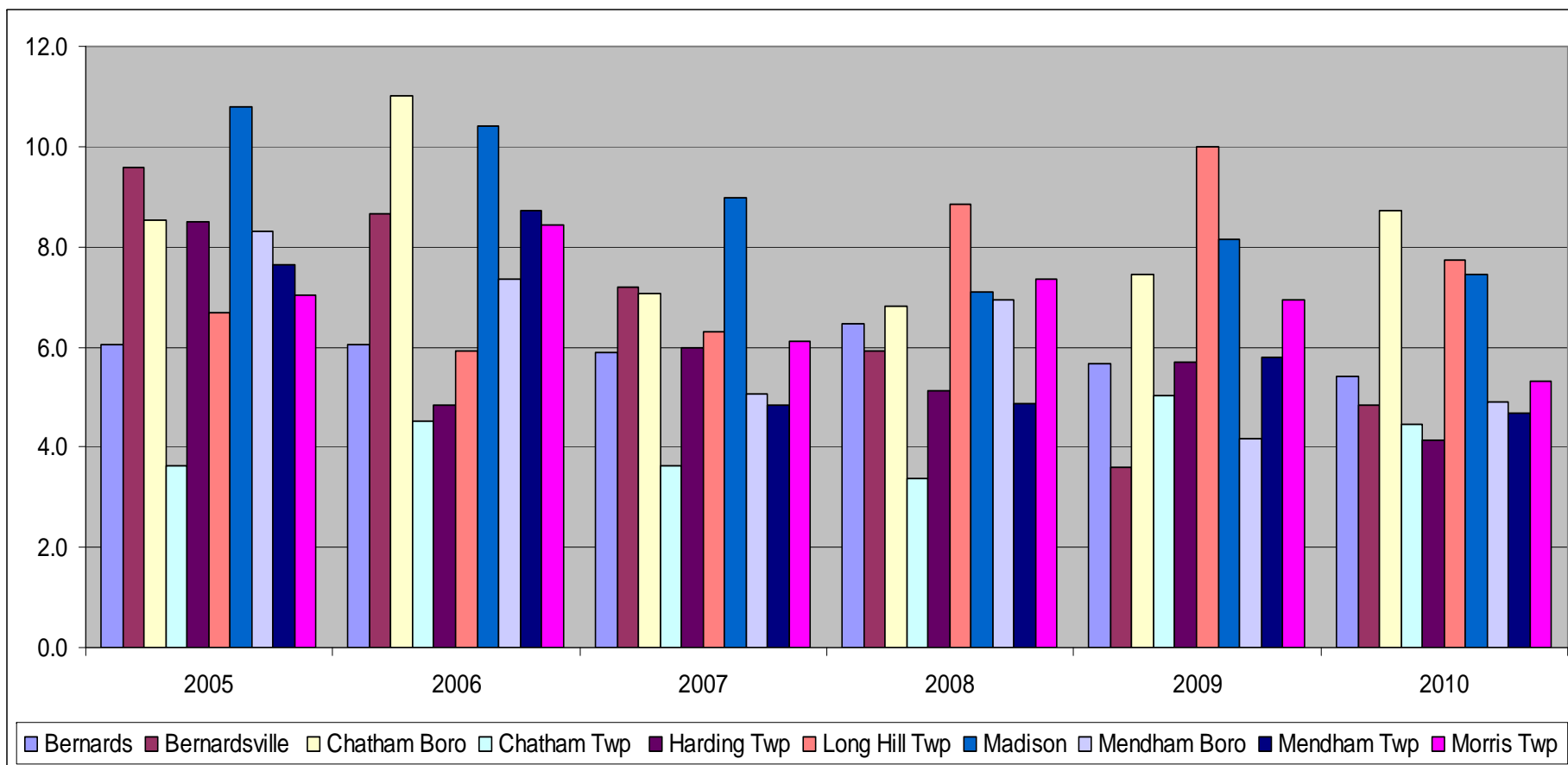
Incident per 1,000 population



Violent Crime – Murder and Non-negligent Manslaughter, Forcible Rape, Robbery, Aggravated Assault

Property Crime 2005 – 2010

Incident per 1,000 population



Property Crime – Burglary, Larceny-Theft, Motor Vehicle Theft, Arson



Harding Township Benchmarking Examination: Public Safety

Presentation to Harding Residents
To be continued September 2012

