



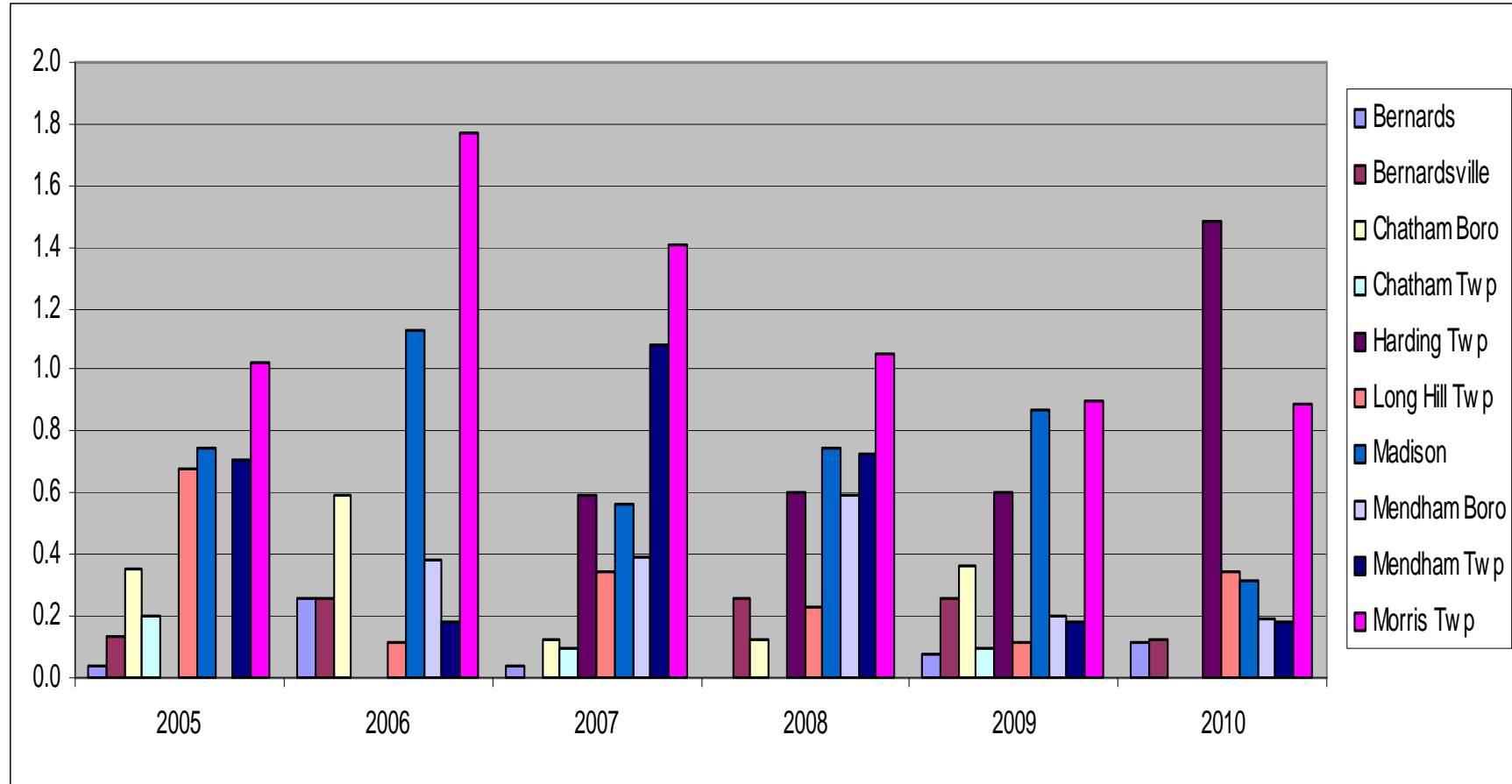
Harding Township
◆ Crime Statistics
◆ Public Safety
◆ Harding Budget Trends: 2000-2012

Presentation to Harding Residents
September 17, 2012



Violent Crime 2005 – 2010

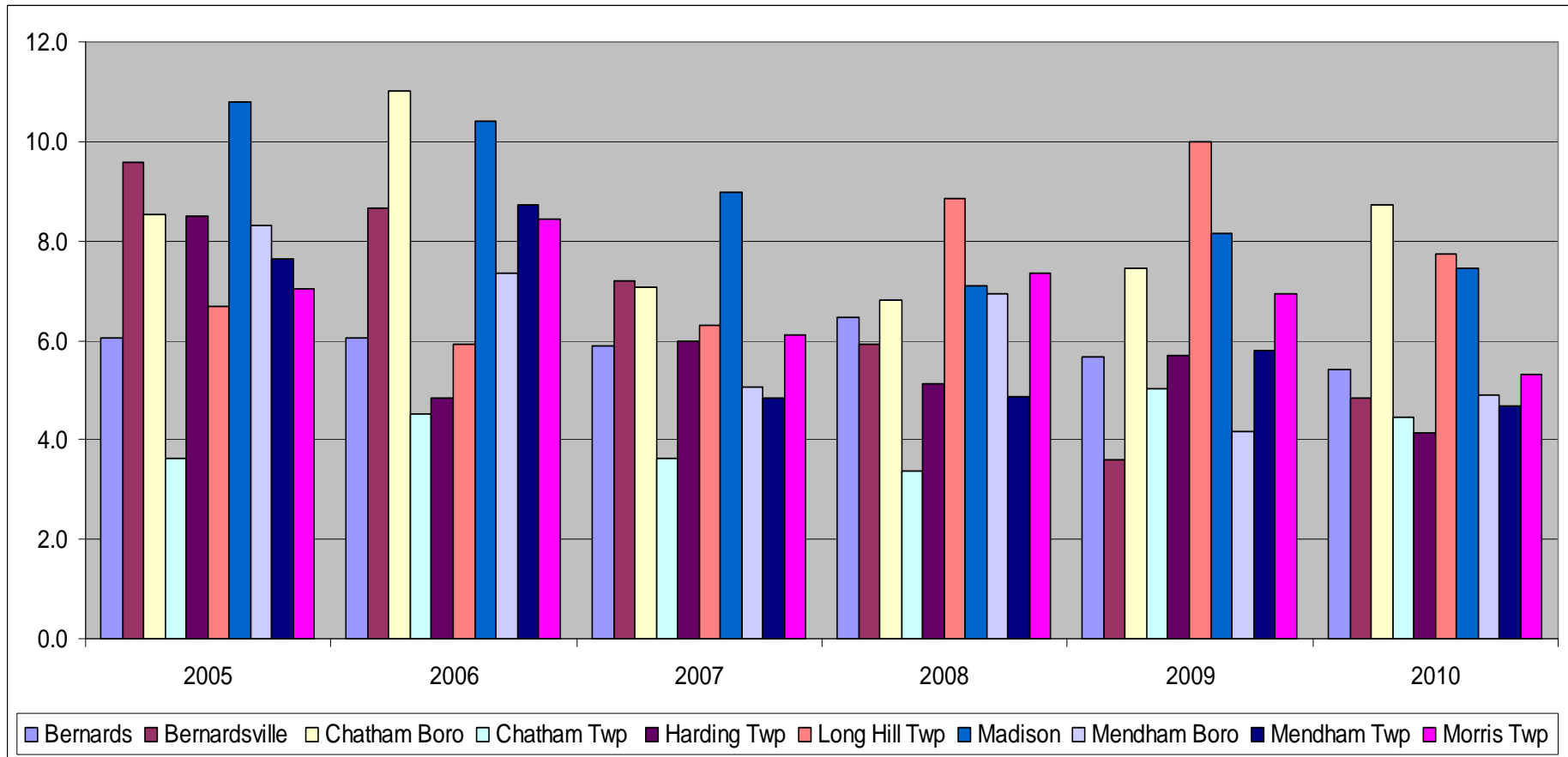
Incident per 1,000 population



Violent Crime – Murder and Non-negligent Manslaughter, Forcible Rape, Robbery, Aggravated Assault

Property Crime 2005 – 2010

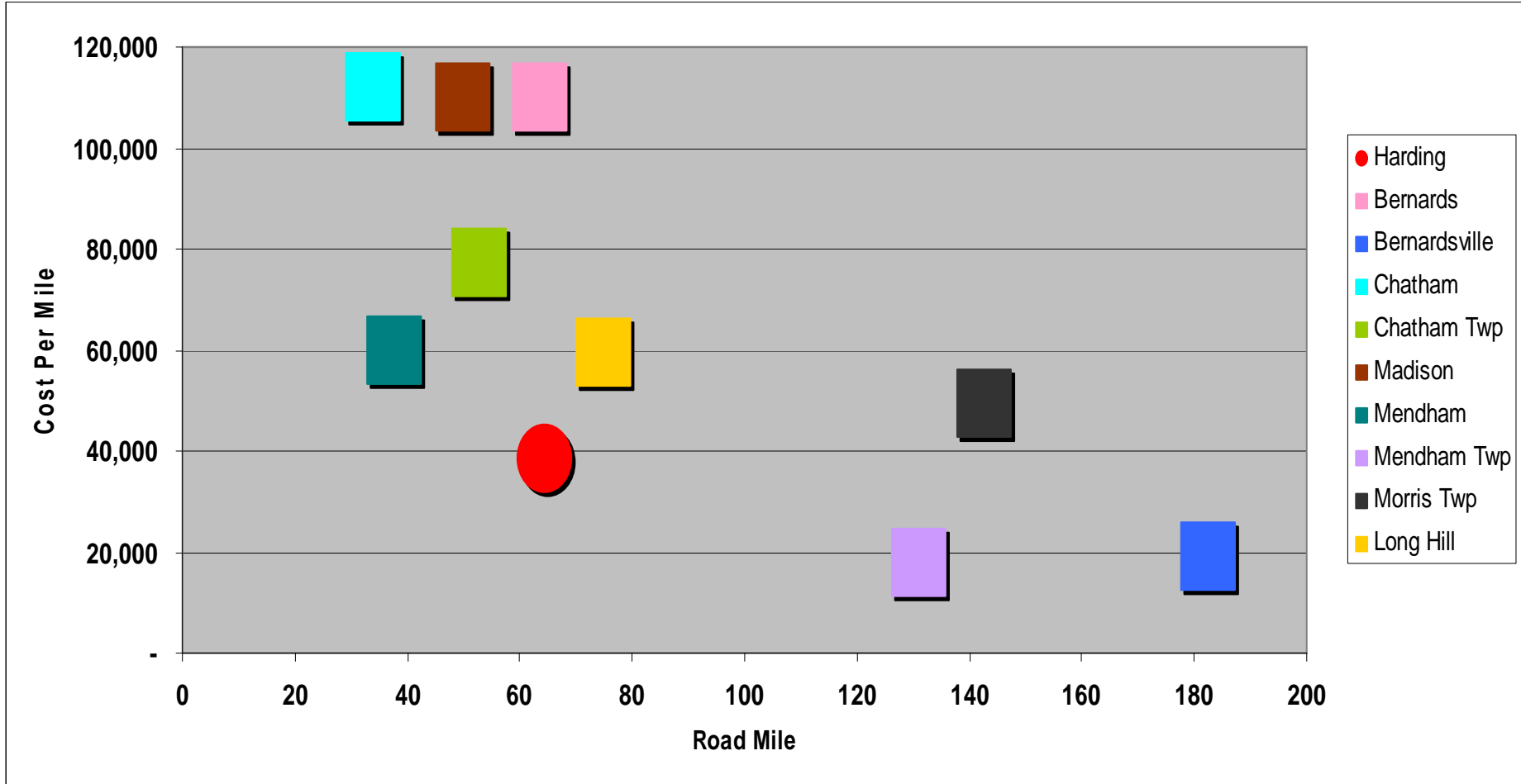
Incident per 1,000 population



Property Crime – Burglary, Larceny-Theft, Motor Vehicle Theft, Arson

Total Public Safety Department Cost (2012) Per Road Mile

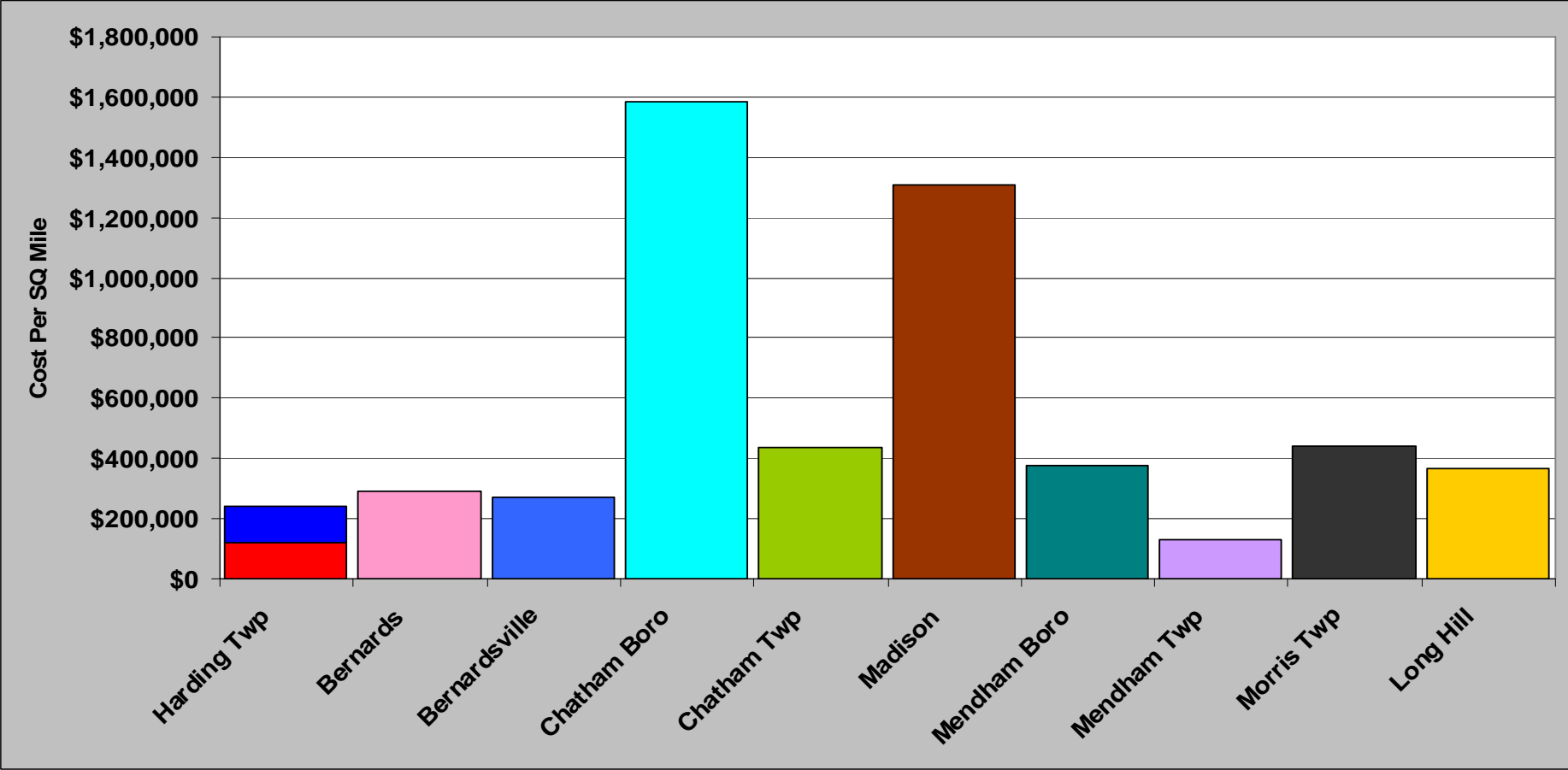
(2012 Department Budget: \$2.47M)



Road Mile Includes: County Road, Municipal Road, State Road, and Private Road

Total Public Safety Department Cost (2012) Per Sq Mile

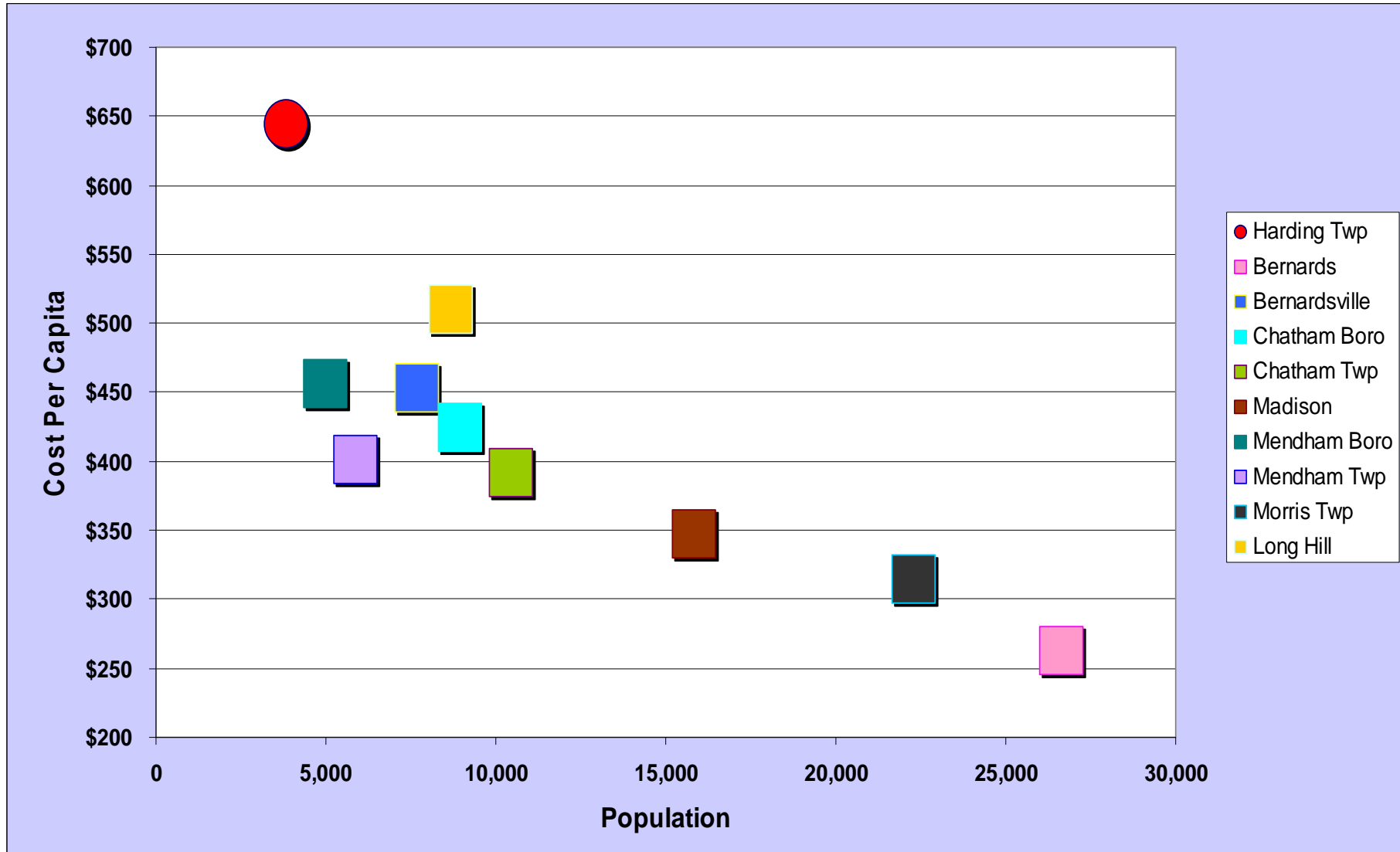
(2012 Department Budget: \$2.47M)



Harding Twp: Red = 20.4 Sq Mile
 Red+Blue = 10.2 Sq Mile

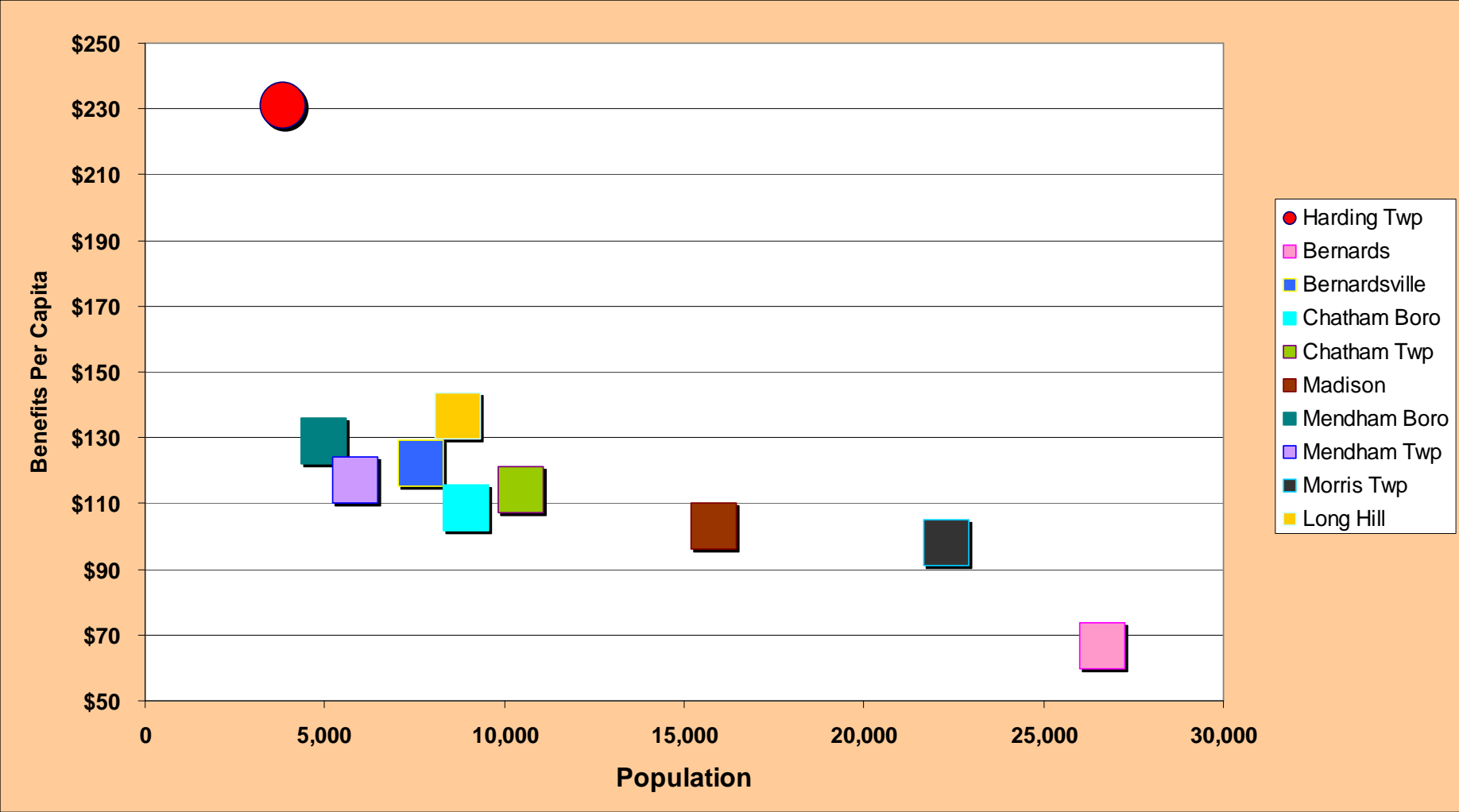
Total Public Safety Cost (2012) Per Capita

(2012 Department Budget: \$2.47M)



Total Cost Includes: Salaries, Other Expenses, Dispatch, Pension, FICA and Health Benefits 6

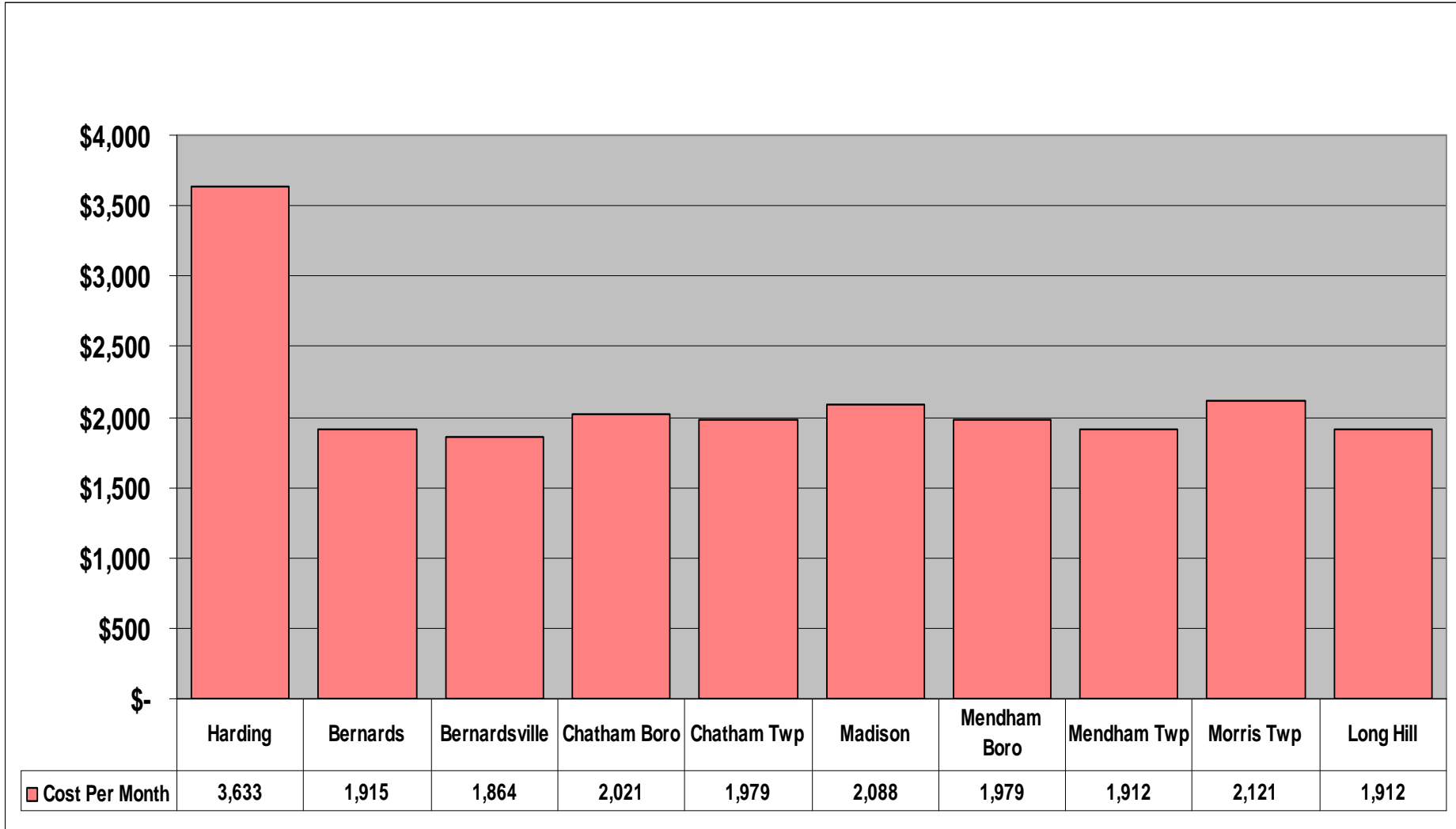
Public Safety Non-Salary Cost Per Capita (2012): Harding Township and Neighboring Towns



Non-Salary: Health Insurance, Pension, and FICA

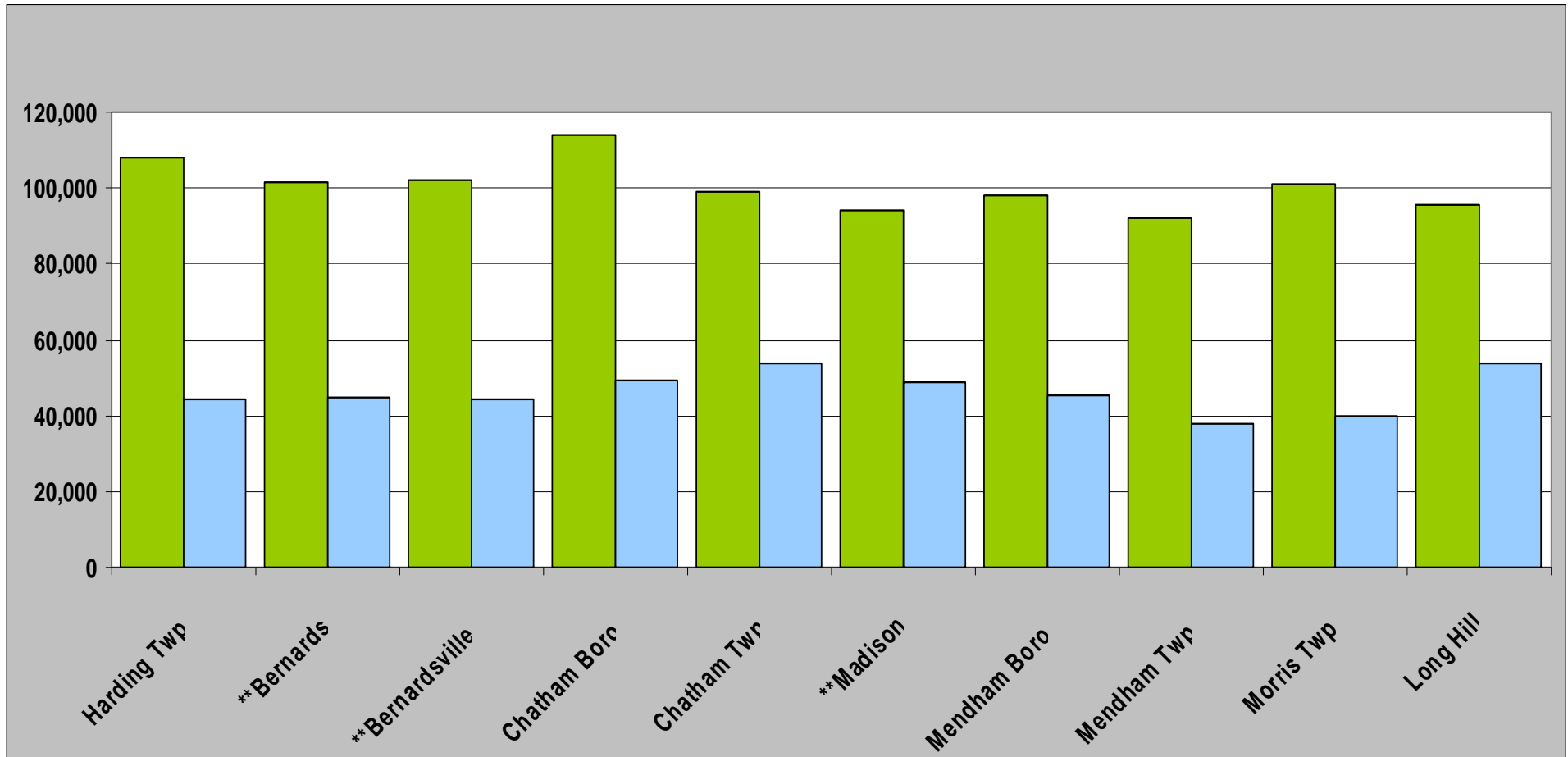
Health Benefit Cost Per Month Per Public Safety Officer on Family Plan

(2012 Department Budget: \$2.45M)



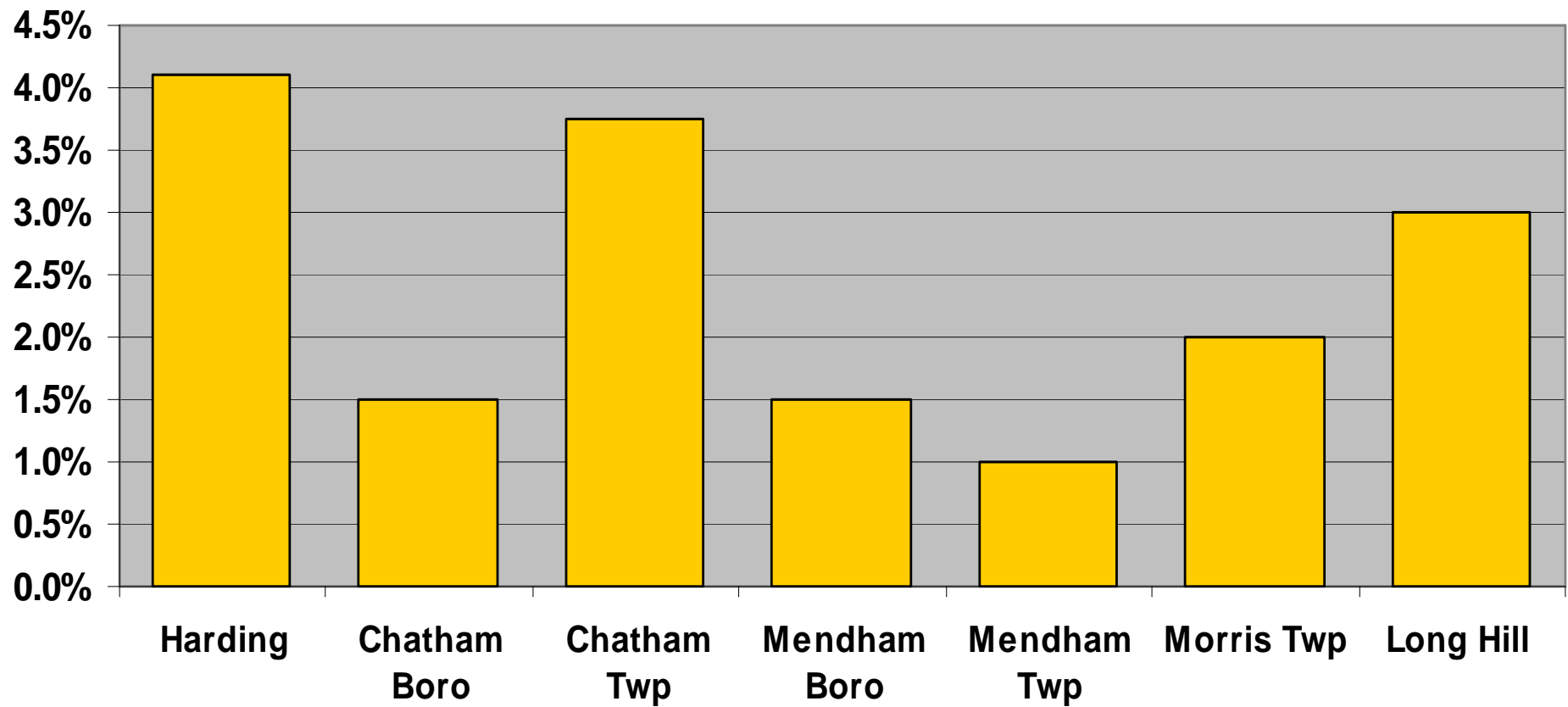
Actual cost per month is lower for those towns where employees contribute

2012 Public Safety Officer Salary Range – Top Step & Probationary Step

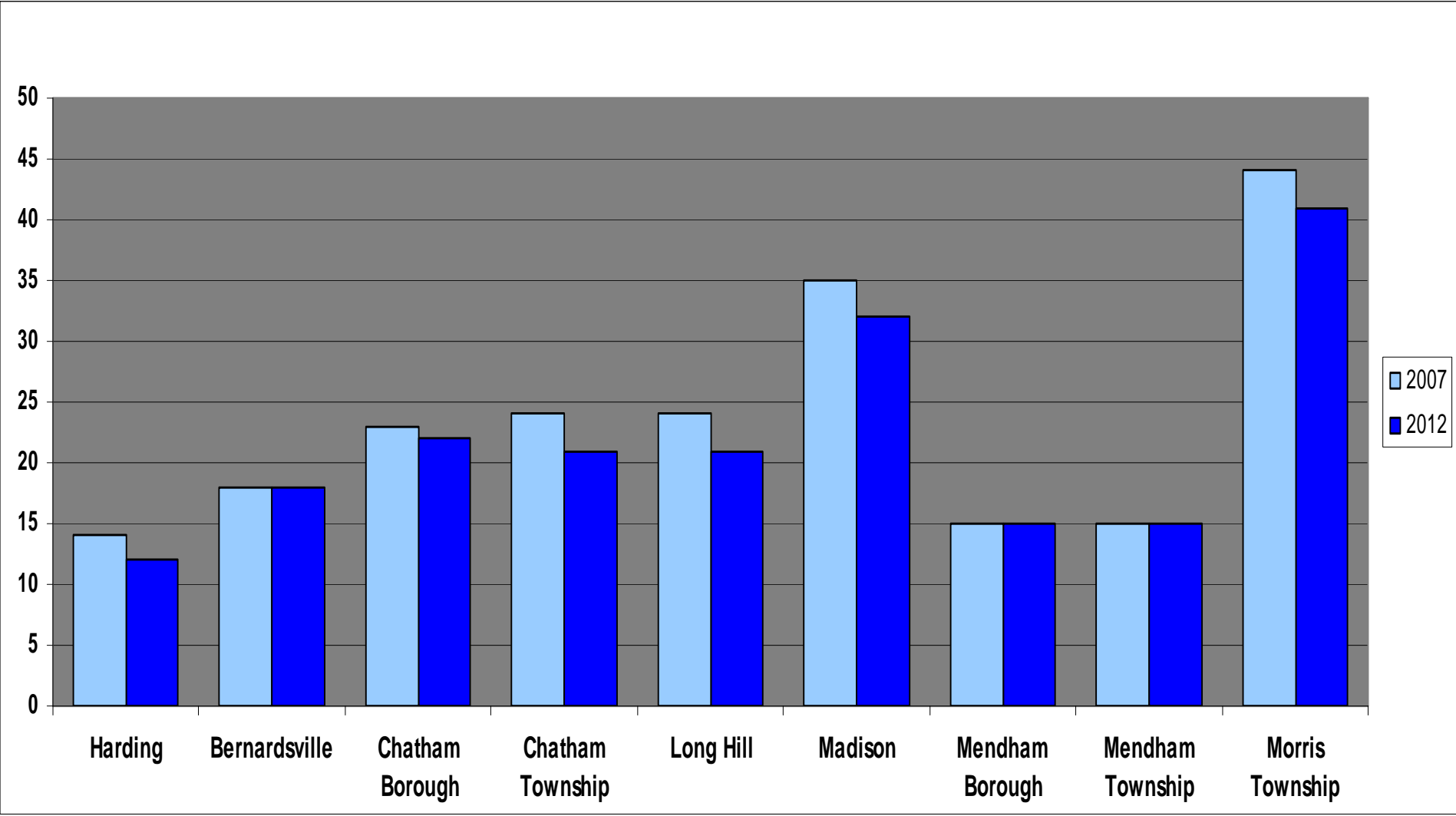


**** Current Year Contract Not Available**

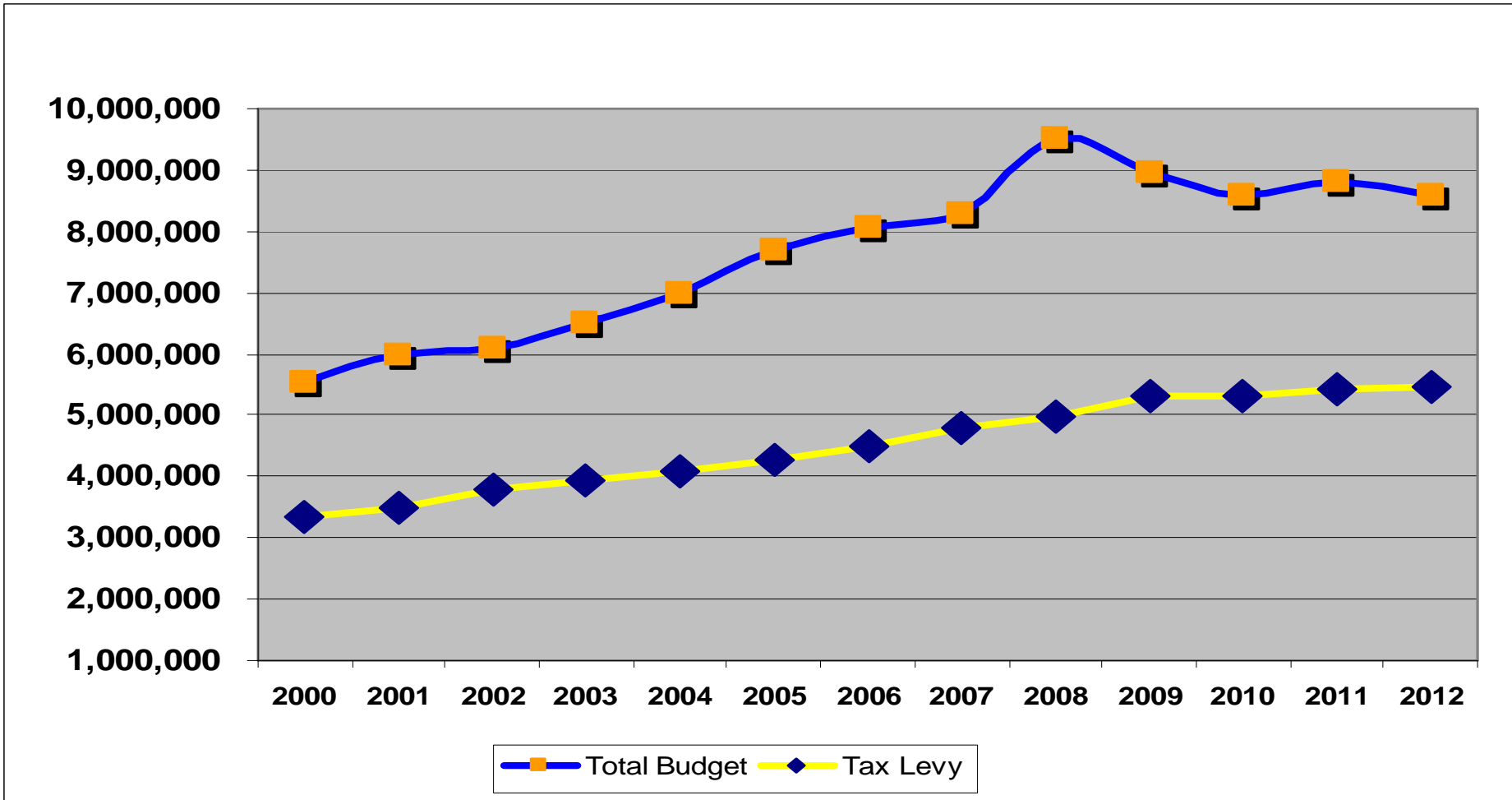
2012 Salary Increase Percentage



Public Safety Staffing – Harding and Neighboring Towns 2007 vs 2012

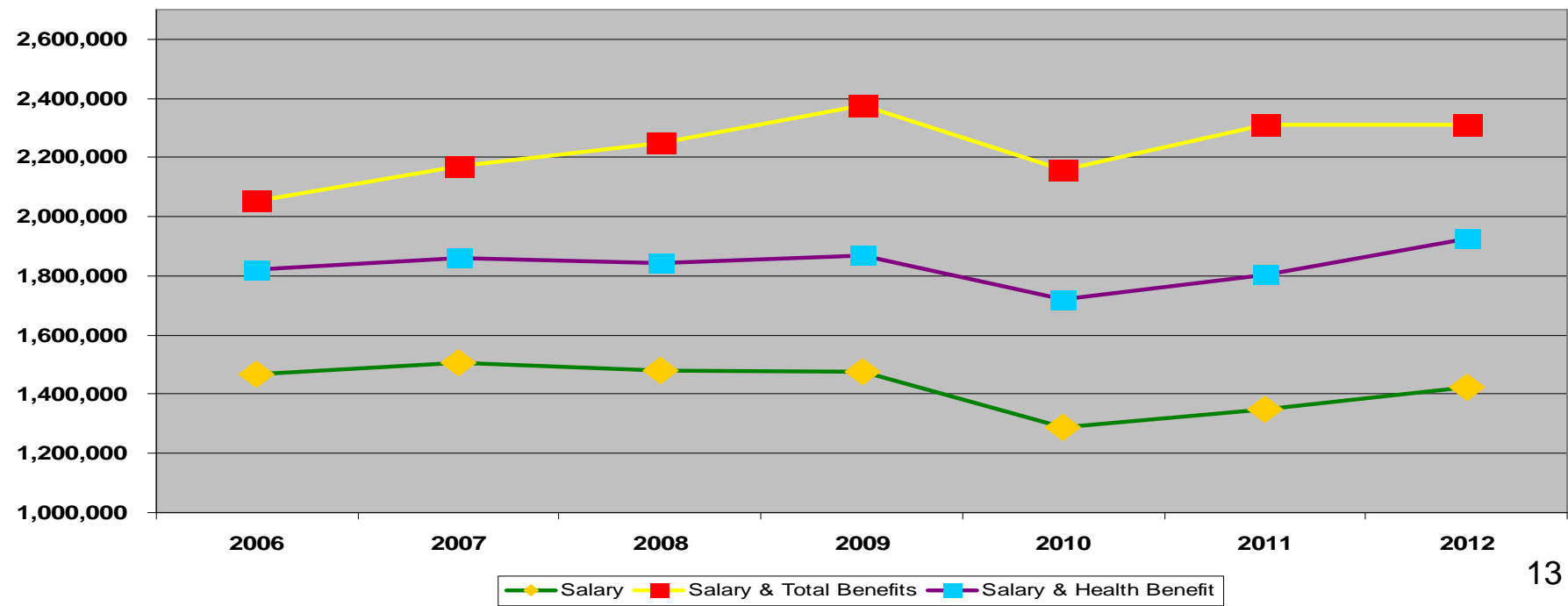
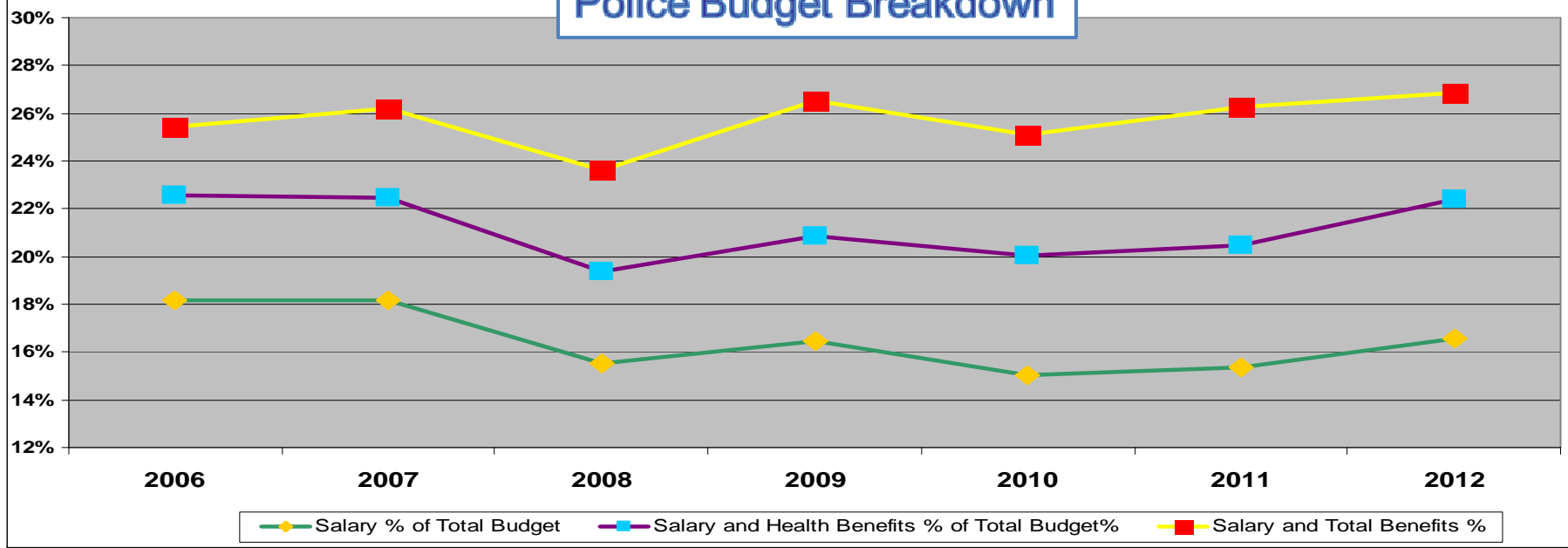


Harding Township: Total Budget and Tax Levy 2000 - 2012

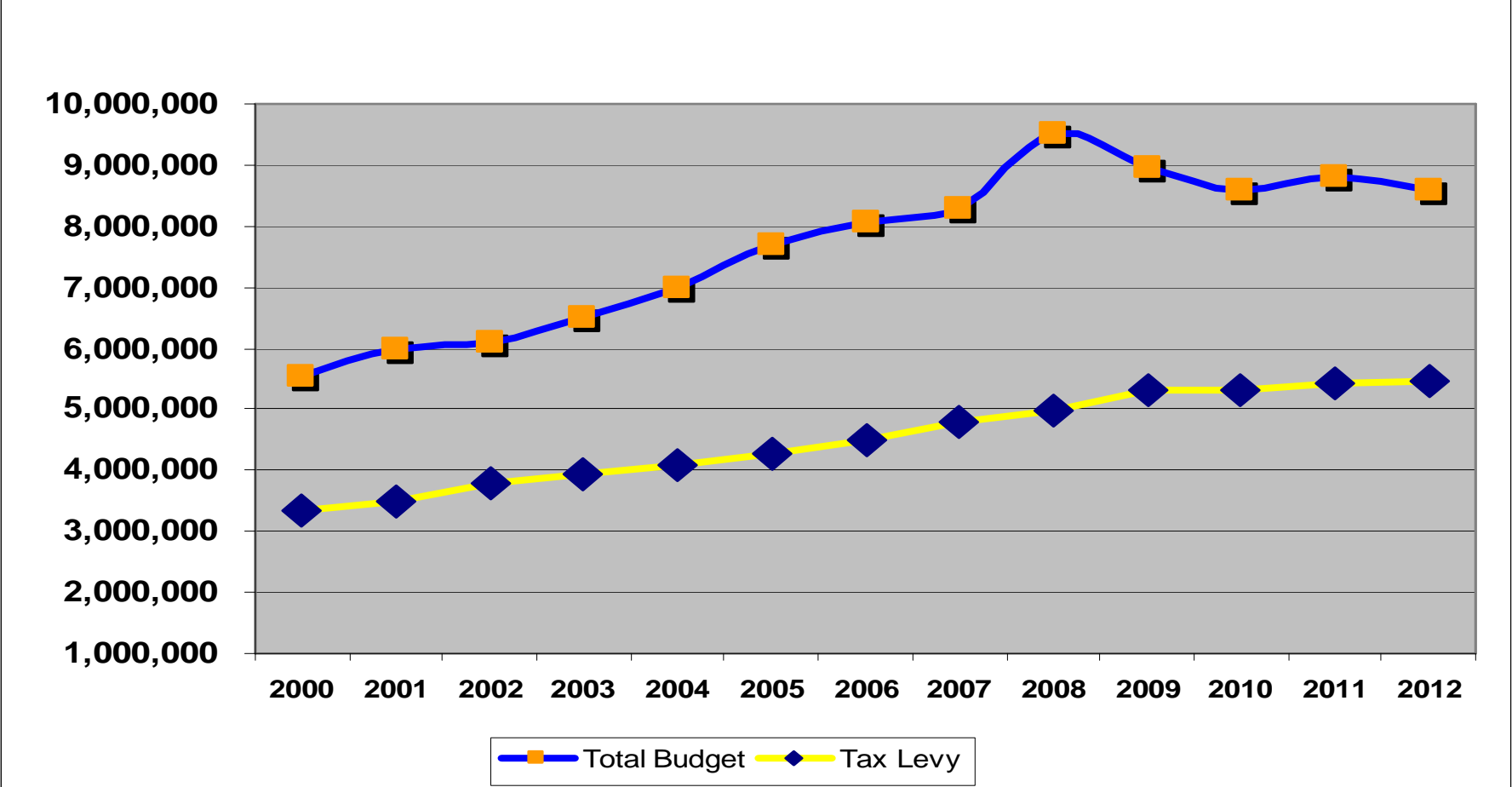


Year	2001	2002	2003	2004	2005	2006	2007	2008	2009	2010	2011	2012
Budget YTY% Change	8.69%	1.41%	7.03%	7.44%	9.70%	5.28%	2.41%	15.12%	-6.00%	-4.12%	2.48%	-2.33%
Tax Levy YTY% Change	5.10%	8.43%	3.60%	3.47%	4.90%	5.40%	6.62%	3.77%	6.14%	0.02%	2.51%	0.88%

Police Budget Breakdown

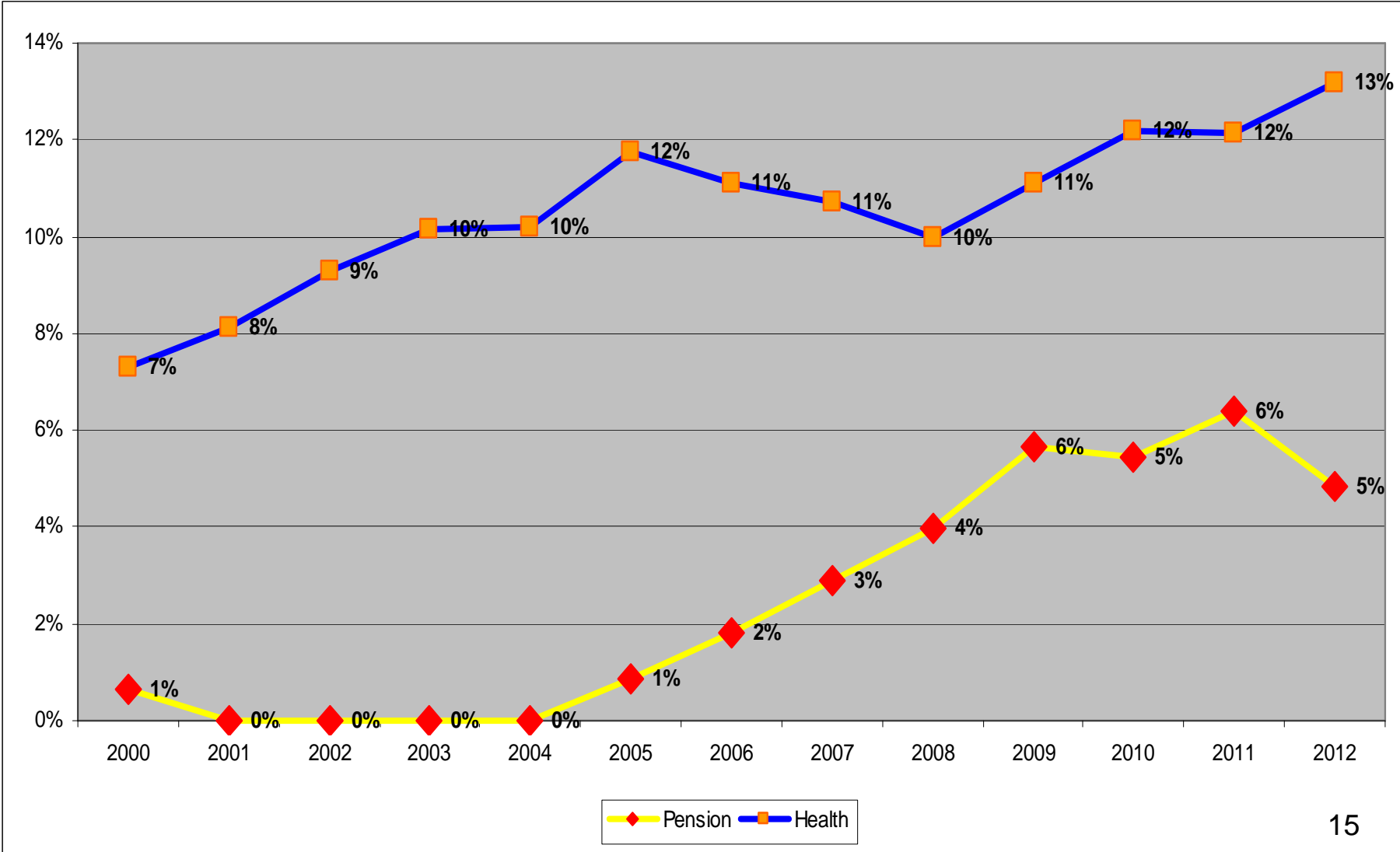


Harding Township: Total Budget and Tax Levy 2000 - 2012



Year	2001	2002	2003	2004	2005	2006	2007	2008	2009	2010	2011	2012
Budget YTY% Change	8.69%	1.41%	7.03%	7.44%	9.70%	5.28%	2.41%	15.12%	-6.00%	-4.12%	2.48%	-2.33%
Tax Levy YTY% Change	5.10%	8.43%	3.60%	3.47%	4.90%	5.40%	6.62%	3.77%	6.14%	0.02%	2.51%	0.88%

Harding Township: Total Health Benefits and Pension Expense as % of Total Budget





Harding Township

◆ Crime Statistics

◆ Public Safety

◆ Harding Budget

Thank you!

Thanking Residents

November 17, 2012

