






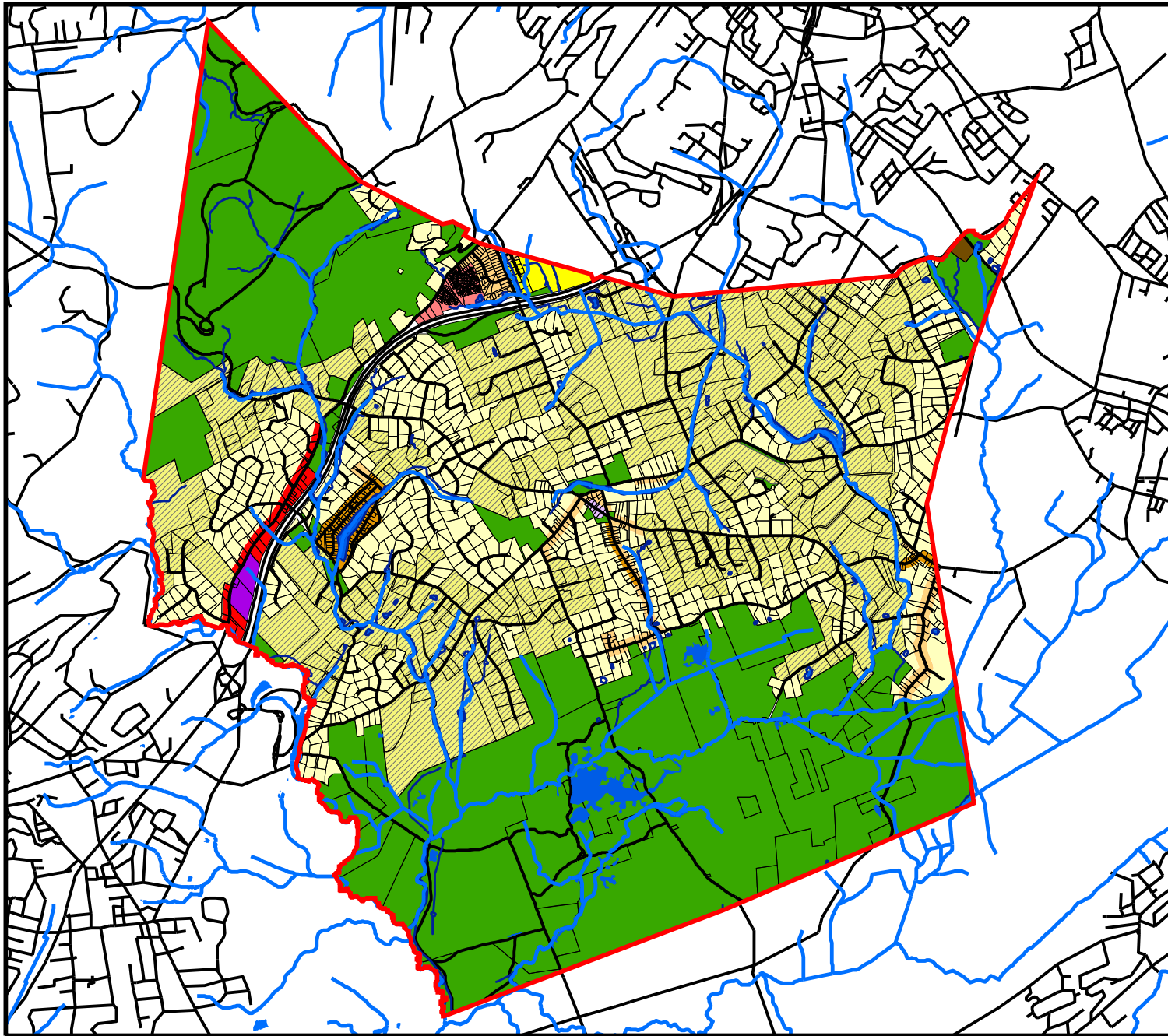


Figure 19 Future Land Use Plan

Harding Township Master Plan
September 2004

Legend

-  RR Rural Residential
-  R-1 Residence
-  R-2 Residence
-  R-3 Residence
-  R-4 Residence
-  AH Affordable Housing
-  PRN-RC Planned Res. Cluster
-  B-1 Historic Village Business Zone
-  B-2 Business
-  OB Office Building
-  PL Public Land
-  Municipal_Boundary
-  Parcels
-  Water
-  Roads



This map was developed using geographic information system digital data developed under the auspices of the Department of Environmental Protection Geographic Information System including NJDEP data as well as data developed by Morris County Department of Planning and Development and Harding Township Land Use Boards. This secondary product has not been verified by these sources. Corrected in accordance with Ordinance 18-06 in August 2006.

