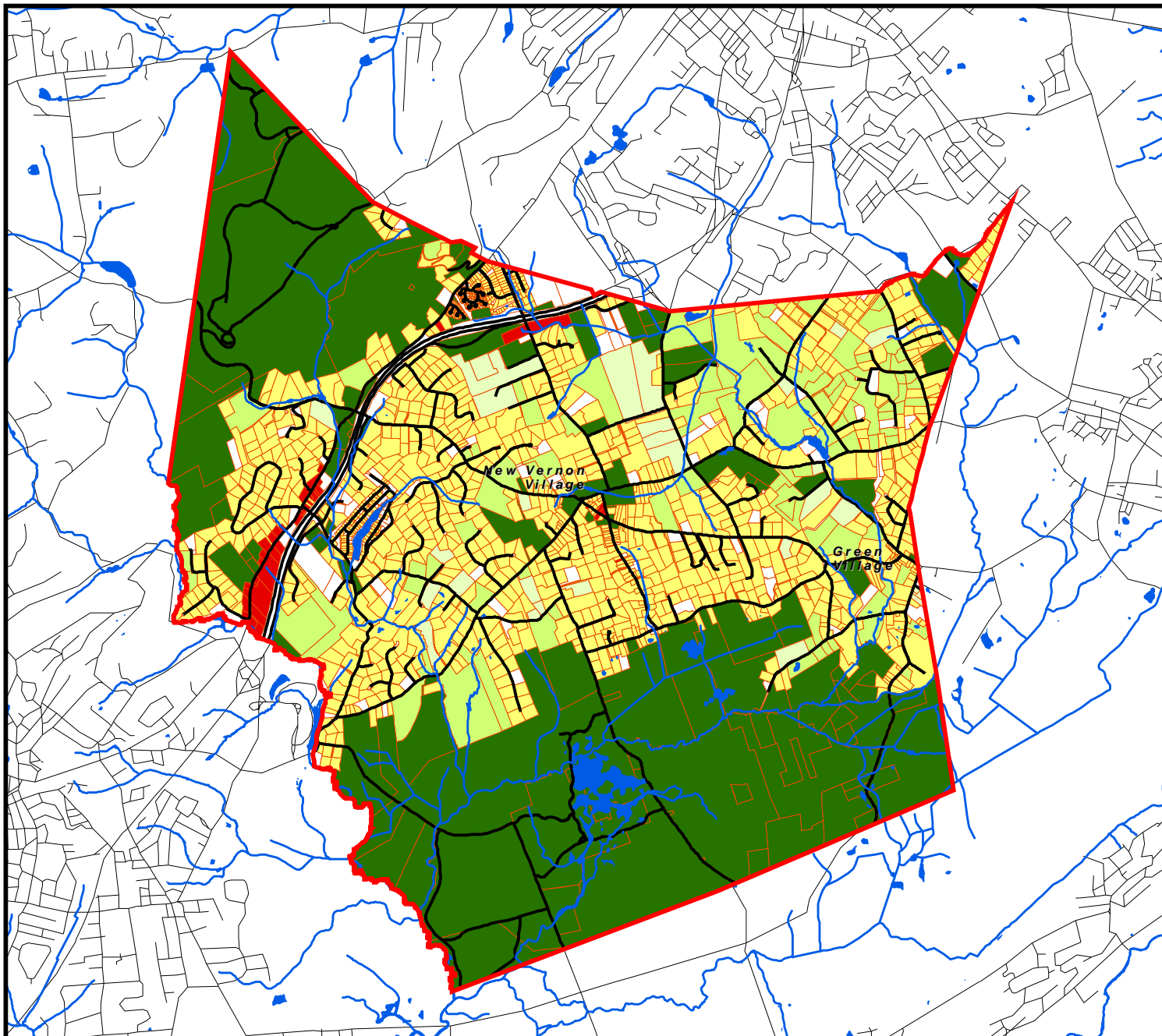


## Figure 17 Existing Land Use

Harding Township Master Plan  
September 2004  
Corrected: February 2005



### Legend

- Public / Quasi-public
- Farmland Assessed
- Farmland Assessed (w/ residence)
- Single-Family Residential
- Commercial
- Vacant
- Municipal Boundary
- Roads
- Water

"Public/Quasi-public" includes parks, privately preserved land and community facilities.

This map was developed using geographic information system digital data developed under the auspices of the Department of Environmental Protection Geographic Information System including NJDEP data as well as data developed by Morris County Department of Planning and Development and Board of Taxation. This secondary product has not been verified by these sources.

Miles

