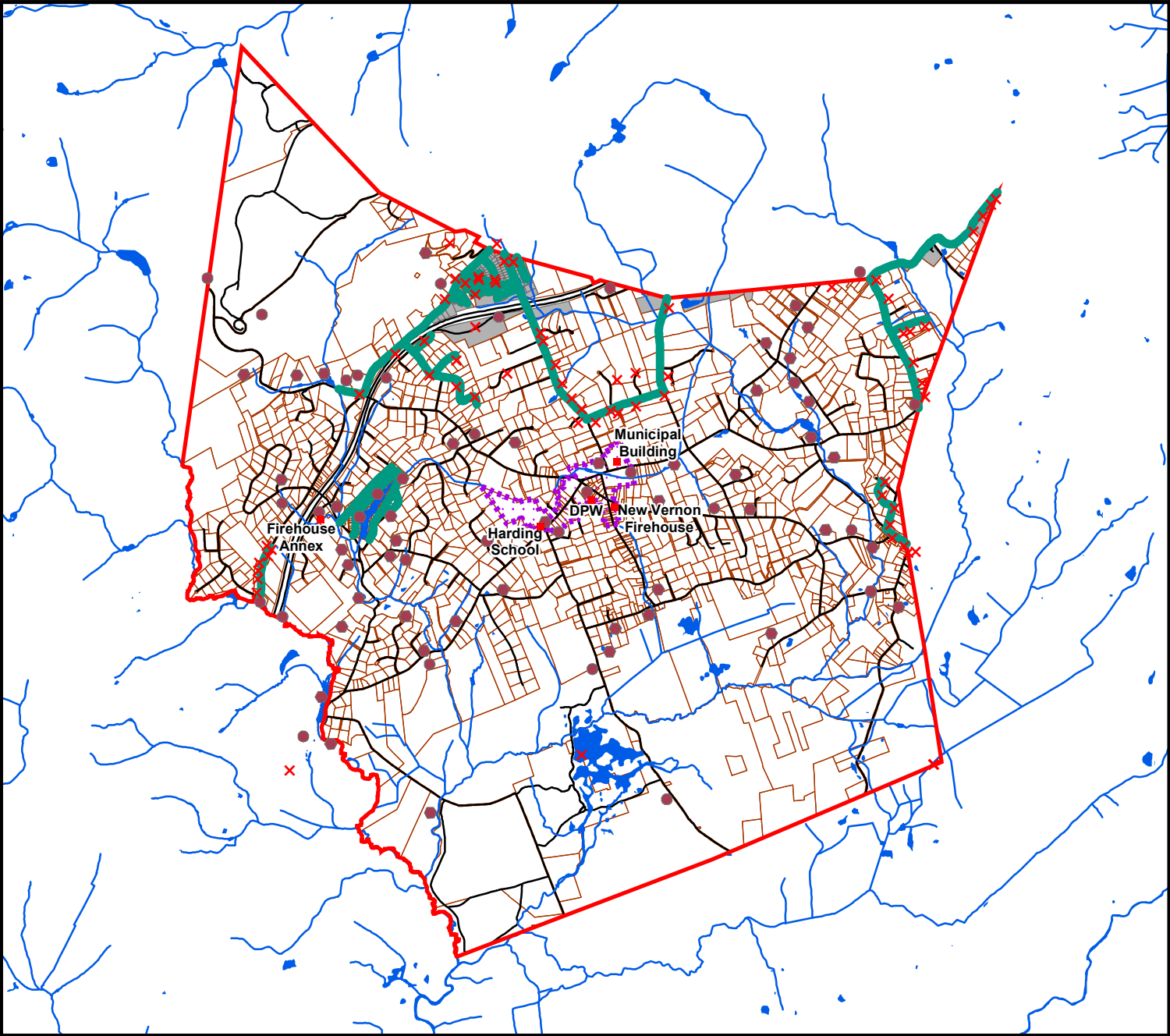


Figure 15 Community Facilities

Harding Township Master Plan
November 2008



- Legend**
- Community Facilities
 - Water Lines
 - Sewer Service Area
 - × Fire Hydrants
 - Fire Water Sources
 - New Vernon Village
 - Municipal Boundary
 - Water Bodies

See Figure 14 for parks and open space



This map was developed using geographic information system digital data developed by the Department of Environmental Protection Geographic Information System including NJDEP data as well as data developed by Morris County Department of Planning and Development and Board of Taxation. Data has been updated by Harding Township using Land Use information from Boards and Commissions, the New Vernon Volunteer Fire Company, Harding Township Health Department, and water companies serving Harding Township. Hydrant and water source locations are schematic only. Data includes changes up through September, 2008.

