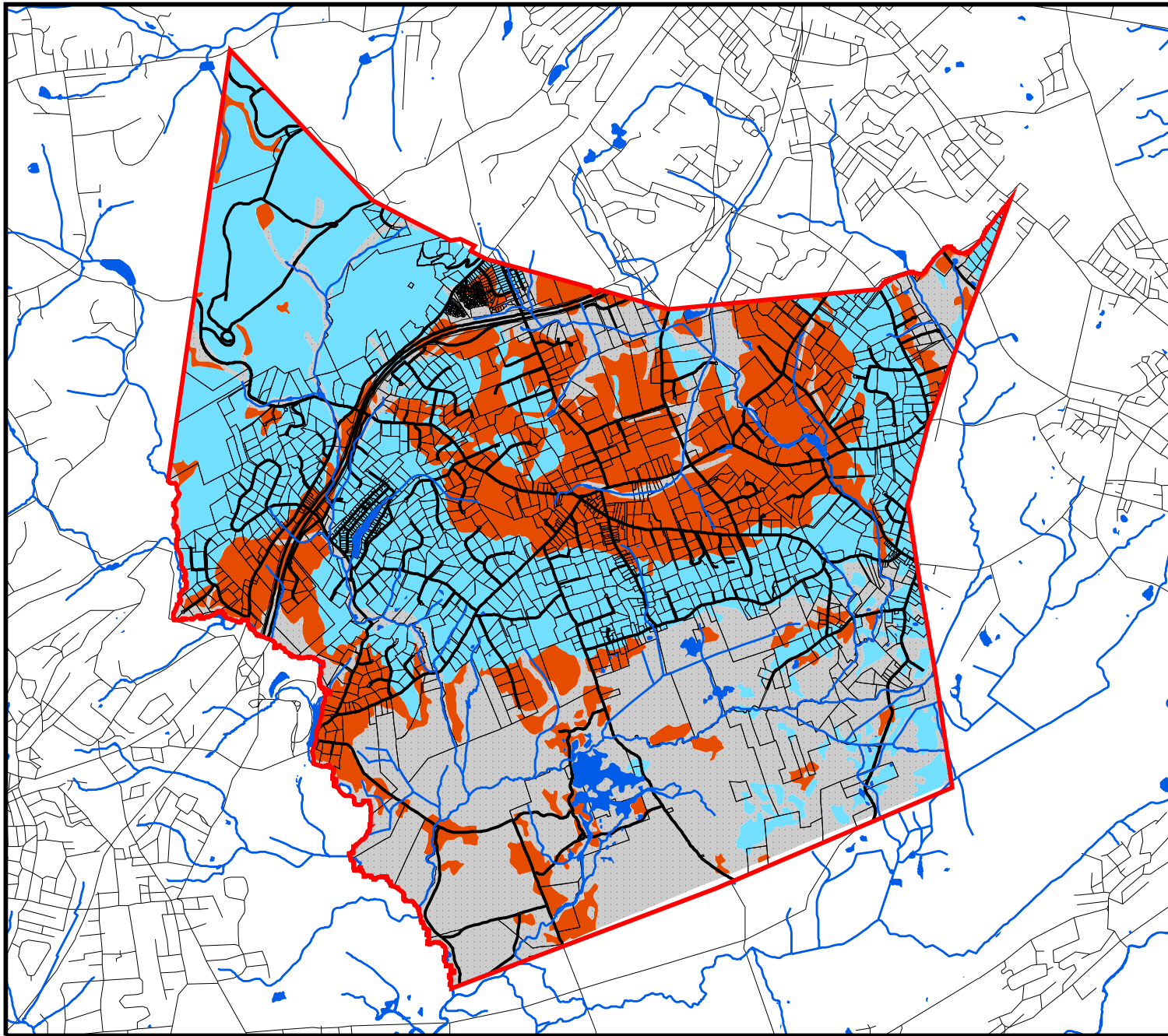


Figure 13 Nitrate Dilution-based Carrying Capacity Analysis

Harding Township Master Plan
September 2004



Legend

- Zone A (3.5 acres/system)
- Zone B (4.2 acres/system)
- Hydric Soils
- Municipal Boundary
- Parcels
- Water
- Roads

Zone outlines from Maser Consulting
"Nitrate Based Carrying Capacity
Assessment" dated 18 March 2004

This map was developed using geographic information system digital data developed under the auspices of the Department of Environmental Protection Geographic Information System including NJDEP data as well as data developed by Morris County Department of Planning and Development and Harding Township Environmental Commission. This secondary product has not been verified by these sources.

